

Product datasheet for **TA329582**

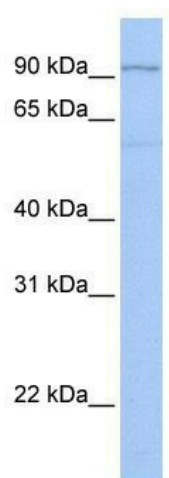
TTC16 Rabbit Polyclonal Antibody

Product data:

Product Type:	Primary Antibodies
Applications:	WB
Recommended Dilution:	WB
Reactivity:	Human
Host:	Rabbit
Isotype:	IgG
Clonality:	Polyclonal
Immunogen:	The immunogen for anti-TTC16 antibody: synthetic peptide directed towards the C terminal of human TTC16. Synthetic peptide located within the following region: RSRGLLRSTKTEAFYDSNWSLSKTEYAQGQGQRSSKAEGAQGKSQGMSS
Formulation:	Liquid. Purified antibody supplied in 1x PBS buffer with 0.09% (w/v) sodium azide and 2% sucrose. <i>Note that this product is shipped as lyophilized powder to China customers.</i>
Conjugation:	Unconjugated
Storage:	Store at -20°C as received.
Stability:	Stable for 12 months from date of receipt.
Predicted Protein Size:	98 kDa
Gene Name:	tetratricopeptide repeat domain 16
Database Link:	NP_659402 Entrez Gene 158248 Human Q8NEE8
Background:	TTC16 contains 8 TPR repeats. The exact function of TTC16 remains unknown.
Synonyms:	RP11-56D16.6
Note:	Immunogen sequence homology: Human: 100%



[View online »](#)

Product images:

WB Suggested Anti-TTC16 Antibody Titration: 0.2-1 ug/ml; Positive Control: MCF7 cell lysate