

Product datasheet for **TA329581**

MTFMT Rabbit Polyclonal Antibody

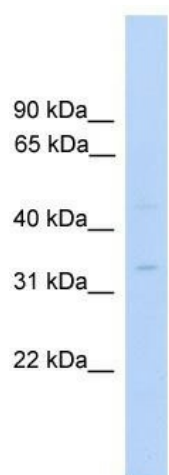
Product data:

Product Type:	Primary Antibodies
Applications:	WB
Recommended Dilution:	WB
Reactivity:	Human
Host:	Rabbit
Isotype:	IgG
Clonality:	Polyclonal
Immunogen:	The immunogen for anti-MTFMT antibody: synthetic peptide directed towards the C terminal of human MTFMT. Synthetic peptide located within the following region: SVMLKKSLTATDFYNGYLHPWYQKNSQAQPSQCRFQTLRLPTKKKQKKTV
Formulation:	Liquid. Purified antibody supplied in 1x PBS buffer with 0.09% (w/v) sodium azide and 2% sucrose. <i>Note that this product is shipped as lyophilized powder to China customers.</i>
Conjugation:	Unconjugated
Storage:	Store at -20°C as received.
Stability:	Stable for 12 months from date of receipt.
Predicted Protein Size:	34 kDa
Gene Name:	mitochondrial methionyl-tRNA formyltransferase
Database Link:	NP_640335 Entrez Gene 123263 Human Q96DP5
Background:	MTFMT formylates methionyl-tRNA in mitochondria. A single tRNA(Met) gene gives rise to both an initiator and an elongator species via an unknown mechanism.
Synonyms:	COXPD15; FMT1
Note:	Immunogen sequence homology: Pig: 100%; Human: 100%; Guinea pig: 100%; Dog: 93%; Bovine: 92%; Rat: 86%; Mouse: 83%; Rabbit: 79%
Protein Pathways:	Aminoacyl-tRNA biosynthesis, One carbon pool by folate



[View online »](#)

Product images:



WB Suggested Anti-MTFMT Antibody Titration:
0.2-1 ug/ml; ELISA Titer: 1:1562500; Positive
Control: Human Fetal Liver