

Product datasheet for **TA329580**

PNPLA5 Rabbit Polyclonal Antibody

Product data:

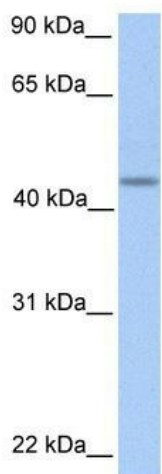
Product Type:	Primary Antibodies
Applications:	WB
Recommended Dilution:	WB
Reactivity:	Human
Host:	Rabbit
Isotype:	IgG
Clonality:	Polyclonal
Immunogen:	The immunogen for anti-PNPLA5 antibody: synthetic peptide directed towards the C terminal of human PNPLA5. Synthetic peptide located within the following region: NMALEVFSRTKAQLLGPISPPATRVLETSPLQPQIAPHREELGPTHQA
Formulation:	Liquid. Purified antibody supplied in 1x PBS buffer with 0.09% (w/v) sodium azide and 2% sucrose.
Conjugation:	Unconjugated
Storage:	Store at -20°C as received.
Stability:	Stable for 12 months from date of receipt.
Predicted Protein Size:	48 kDa
Gene Name:	patatin like phospholipase domain containing 5
Database Link:	NP_620169 Entrez Gene 150379 Human Q7Z6Z6
Background:	Human patatin-like phospholipases, such as PNPLA5, have been implicated in regulation of adipocyte differentiation and have been induced by metabolic stimuli. Human patatin-like phospholipases, such as PNPLA5, have been implicated in regulation of adipocyte differentiation and have been induced by metabolic stimuli (Wilson et al., 2006 [PubMed 16799181]). [supplied by OMIM]. Human patatin-like phospholipases, such as PNPLA5, have been implicated in regulation of adipocyte differentiation and have been induced by metabolic stimuli (Wilson et al., 2006 [PubMed 16799181]). [supplied by OMIM]
Synonyms:	dj388M5; dj388M5.4; GS2L



[View online »](#)

Note: Immunogen sequence homology: Human: 100%

Product images:



WB Suggested Anti-PNPLA5 Antibody Titration:
0.2-1 ug/ml; Positive Control: Human Fetal Muscle