

Product datasheet for **TA329577**

PWWP domain containing protein 2B (PWWP2B) Rabbit Polyclonal Antibody

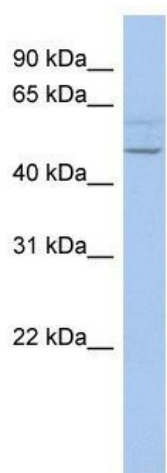
Product data:

Product Type:	Primary Antibodies
Applications:	WB
Recommended Dilution:	WB
Reactivity:	Human
Host:	Rabbit
Isotype:	IgG
Clonality:	Polyclonal
Immunogen:	The immunogen for anti-PWWP2B antibody: synthetic peptide directed towards the N terminal of human PWWP2B. Synthetic peptide located within the following region: ILLDCTKKSGLFGLPPLAPLPQVDESPVNDSHGRAPEEGDAEVMQLGSSS
Formulation:	Liquid. Purified antibody supplied in 1x PBS buffer with 0.09% (w/v) sodium azide and 2% sucrose.
Conjugation:	Unconjugated
Storage:	Store at -20°C as received.
Stability:	Stable for 12 months from date of receipt.
Predicted Protein Size:	53 kDa
Gene Name:	PWWP domain containing 2B
Database Link:	NP_612508 Entrez Gene 170394 Human Q6NUJ5
Background:	The specific function of this protein remains unknown.
Synonyms:	bA432J24.1; pp8607; PWWP2
Note:	Immunogen sequence homology: Pig: 100%; Human: 100%; Bovine: 100%; Rat: 93%; Mouse: 92%



[View online »](#)

Product images:



WB Suggested Anti-PWWP2B Antibody Titration:
0.2-1 ug/ml; ELISA Titer: 1:62500; Positive Control:
DU145 cell lysate