

## Product datasheet for **TA329576**

### TTC5 Rabbit Polyclonal Antibody

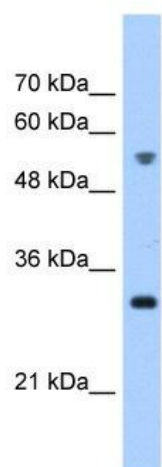
#### Product data:

Product Type:	Primary Antibodies
Applications:	WB
Recommended Dilution:	WB
Reactivity:	Human
Host:	Rabbit
Isotype:	IgG
Clonality:	Polyclonal
Immunogen:	The immunogen for anti-TTC5 antibody: synthetic peptide directed towards the C terminal of human TTC5. Synthetic peptide located within the following region: GDSVAIPEPNLRLHRIQHKGDYSFSSVRVETPLLLVNGKPGSSSQAV
Formulation:	Liquid. Purified antibody supplied in 1x PBS buffer with 0.09% (w/v) sodium azide and 2% sucrose. <i>Note that this product is shipped as lyophilized powder to China customers.</i>
Conjugation:	Unconjugated
Storage:	Store at -20°C as received.
Stability:	Stable for 12 months from date of receipt.
Predicted Protein Size:	49 kDa
Gene Name:	tetratricopeptide repeat domain 5
Database Link:	<a href="#">NP_612385</a> <a href="#">Entrez Gene 91875 Human</a> <a href="#">Q8N0Z6</a>
Background:	TTC5 is an adapter protein involved in p53/TP53 response that acts by regulating and mediating the assembly of multi-protein complexes. It is required to facilitate the interaction between JMY and p300/EP300 and increase p53/TP53-dependent transcription and apoptosis. It prevents p53/TP53 degradation by MDM2.
Synonyms:	Strap
Note:	Immunogen sequence homology: Pig: 100%; Human: 100%; Bovine: 100%; Rat: 93%; Horse: 93%; Guinea pig: 93%; Dog: 86%; Mouse: 86%; Rabbit: 86%



[View online »](#)

## Product images:



WB Suggested Anti-TTC5 Antibody Titration: 0.2-1 ug/ml; Positive Control: HepG2 cell lysate