

Product datasheet for **TA329575**

NEK7 Rabbit Polyclonal Antibody

Product data:

Product Type:	Primary Antibodies
Applications:	WB
Recommended Dilution:	WB
Reactivity:	Human
Host:	Rabbit
Isotype:	IgG
Clonality:	Polyclonal
Immunogen:	The immunogen for anti-NEK7 antibody: synthetic peptide directed towards the N terminal of human NEK7. Synthetic peptide located within the following region: KARADCIKEIDLLKQLNHPNVIKYYASFIEDNELNIVLELADAGDLSRMI
Formulation:	Liquid. Purified antibody supplied in 1x PBS buffer with 0.09% (w/v) sodium azide and 2% sucrose. <i>Note that this product is shipped as lyophilized powder to China customers.</i>
Conjugation:	Unconjugated
Storage:	Store at -20°C as received.
Stability:	Stable for 12 months from date of receipt.
Predicted Protein Size:	34 kDa
Gene Name:	NIMA related kinase 7
Database Link:	NP_598001 Entrez Gene 140609 Human Q8TDX7
Background:	NIMA-related kinases share high amino acid sequence identity with the gene product of the <i>Aspergillus nidulans</i> 'never in mitosis A' gene, which controls initiation of mitosis. NIMA-related kinases share high amino acid sequence identity with the gene product of the <i>Aspergillus nidulans</i> 'never in mitosis A' gene, which controls initiation of mitosis. [supplied by OMIM]
Synonyms:	NIMA (never in mitosis gene a)-related kinase 7; NIMA-related kinase 7; OTTHUMP00000033680

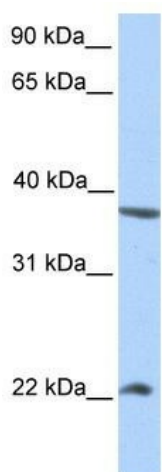


[View online »](#)

Note: Immunogen sequence homology: Dog: 100%; Pig: 100%; Rat: 100%; Horse: 100%; Human: 100%; Mouse: 100%; Bovine: 100%; Zebrafish: 100%; Guinea pig: 100%; Rabbit: 93%; Yeast: 92%; Goat: 79%; Sheep: 79%

Protein Families: Druggable Genome, Protein Kinase

Product images:



WB Suggested Anti-NEK7 Antibody Titration: 0.2-1 ug/ml; Positive Control: HepG2 cell lysate