

Product datasheet for **TA329574**

GPT2 Rabbit Polyclonal Antibody

Product data:

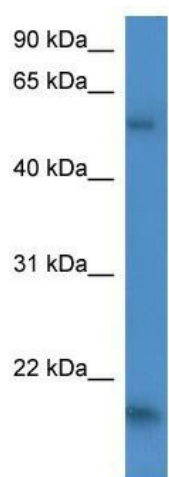
Product Type:	Primary Antibodies
Applications:	WB
Recommended Dilution:	WB
Reactivity:	Human
Host:	Rabbit
Isotype:	IgG
Clonality:	Polyclonal
Immunogen:	The immunogen for anti-GPT2 antibody: synthetic peptide directed towards the C terminal of human GPT2. Synthetic peptide located within the following region: PEYSSNVELASFHSTSKGYMGECGYRGGYMEVINLHPEIKGQLVKLLSVR
Formulation:	Liquid. Purified antibody supplied in 1x PBS buffer with 0.09% (w/v) sodium azide and 2% sucrose. <i>Note that this product is shipped as lyophilized powder to China customers.</i>
Conjugation:	Unconjugated
Storage:	Store at -20°C as received.
Stability:	Stable for 12 months from date of receipt.
Predicted Protein Size:	58 kDa
Gene Name:	glutamic pyruvate transaminase (alanine aminotransferase) 2
Database Link:	NP_597700 Entrez Gene 84706 Human Q8TD30
Background:	GPT and GPT2 (EC 2.6.1.2), also known as alanine transaminases, are pyridoxal enzymes that catalyze the reversible transamination between alanine and 2-oxoglutarate to form pyruvate and glutamate. By mediating the conversion of these 4 major intermediate metabolites, these transaminases have roles in gluconeogenesis and in amino acid metabolism.
Synonyms:	ALT2
Note:	Immunogen sequence homology: Dog: 100%; Pig: 100%; Rat: 100%; Horse: 100%; Human: 100%; Mouse: 100%; Bovine: 100%; Rabbit: 100%; Guinea pig: 100%; Zebrafish: 86%



[View online »](#)

Protein Pathways: Alanine, aspartate and glutamate metabolism, Metabolic pathways

Product images:



WB Suggested Anti-GPT2 Antibody Titration: 0.2-1 ug/ml; ELISA Titer: 1:312500; Positive Control: HepG2 cell lysate