

Product datasheet for **TA329573**

CHST14 Rabbit Polyclonal Antibody

Product data:

Product Type:	Primary Antibodies
Applications:	WB
Recommended Dilution:	WB
Reactivity:	Human
Host:	Rabbit
Isotype:	IgG
Clonality:	Polyclonal
Immunogen:	The immunogen for anti-CHST14 antibody: synthetic peptide directed towards the middle region of human CHST14. Synthetic peptide located within the following region: REYQQRYGAEIVRRYRAGAGPSPAGDDVTFPEFLRYLVDEDPERMNEHWM
Formulation:	Liquid. Purified antibody supplied in 1x PBS buffer with 0.09% (w/v) sodium azide and 2% sucrose. <i>Note that this product is shipped as lyophilized powder to China customers.</i>
Conjugation:	Unconjugated
Storage:	Store at -20°C as received.
Stability:	Stable for 12 months from date of receipt.
Predicted Protein Size:	35 kDa
Gene Name:	carbohydrate sulfotransferase 14
Database Link:	NP_569735 Entrez Gene 113189 Human Q8NCHO
Background:	CHST14 belongs to the sulfotransferase 2 family. CHST14 catalyzes the transfer of sulfate to position 4 of the N-acetylgalactosamine (GalNAc) residue of dermatan sulfate. It transfers sulfate to the C-4 hydroxyl of beta1,4-linked GalNAc that is substituted with an alpha-linked iduronic acid (IdoUA) at the C-3 hydroxyl. It transfers sulfate more efficiently to GalNAc residues in -IdoUA-GalNAc-IdoUA- than in -GlcUA-GalNAc-GlcUA-sequences. CHST14 has preference for partially desulfated dermatan sulfate. Addition of sulfate to GalNAc may occur immediately after epimerization of GlcUA to IdoUA.



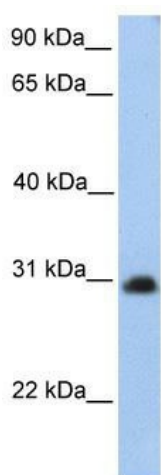
[View online »](#)

Synonyms: ATCS; D4ST1; EDSMC1; HNK1ST

Note: Immunogen sequence homology: Dog: 100%; Pig: 100%; Rat: 100%; Human: 100%; Mouse: 100%; Bovine: 100%; Guinea pig: 86%

Protein Pathways: Chondroitin sulfate biosynthesis

Product images:



WB Suggested Anti-CHST14 Antibody Titration:
0.2-1 ug/ml; Positive Control: HepG2 cell lysate