

Product datasheet for **TA329572**

NARG1 (NAA15) Rabbit Polyclonal Antibody

Product data:

Product Type:	Primary Antibodies
Applications:	WB
Recommended Dilution:	WB
Reactivity:	Human
Host:	Rabbit
Isotype:	IgG
Clonality:	Polyclonal
Immunogen:	The immunogen for anti-NARG1 antibody: synthetic peptide directed towards the middle region of human NARG1. Synthetic peptide located within the following region: PPVFNTLRSLYKDKEKVAIIIEELVVGYETSLKSCRLFNPNDGKEEPPTT
Formulation:	Liquid. Purified antibody supplied in 1x PBS buffer with 0.09% (w/v) sodium azide and 2% sucrose. <i>Note that this product is shipped as lyophilized powder to China customers.</i>
Conjugation:	Unconjugated
Storage:	Store at -20°C as received.
Stability:	Stable for 12 months from date of receipt.
Predicted Protein Size:	101 kDa
Gene Name:	N(alpha)-acetyltransferase 15, NatA auxiliary subunit
Database Link:	NP_476516 Entrez Gene 80155 Human Q9BXI9

Background: The ARD1A-NARG1 complex displays alpha (N-terminal) acetyltransferase activity that may be important for vascular, hematopoietic and neuronal growth and development. NARG1 is required to control retinal neovascularization in adult ocular endothelial cells. In complex with G22P1 and XRCC5 (Ku80), up-regulates transcription from the osteocalcin promoter. This gene encodes a protein of unknown function. However, similarity to proteins in yeast and other species suggests that this protein may be an N-acetyltransferase. Publication Note: This RefSeq record includes a subset of the publications that are available for this gene. Please see the Entrez Gene record to access additional publications.



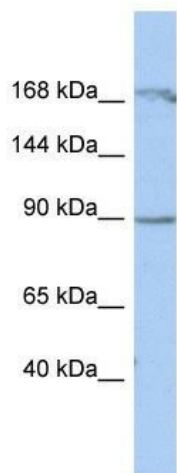
[View online »](#)

Synonyms: Ga19; NARG1; NAT1P; NATH; TBDN; TBDN100

Note: Immunogen sequence homology: Dog: 100%; Rat: 100%; Horse: 100%; Human: 100%; Mouse: 100%; Bovine: 100%; Rabbit: 100%; Pig: 93%; Guinea pig: 93%; Zebrafish: 86%

Protein Families: Druggable Genome, Transcription Factors

Product images:



WB Suggested Anti-NARG1 Antibody Titration:
0.2-1 ug/ml; ELISA Titer: 1:312500; Positive
Control: THP-1 cell lysate