

## Product datasheet for **TA329570**

### ART5 Rabbit Polyclonal Antibody

#### Product data:

Product Type:	Primary Antibodies
Applications:	WB
Recommended Dilution:	WB
Reactivity:	Human
Host:	Rabbit
Isotype:	IgG
Clonality:	Polyclonal
Immunogen:	The immunogen for anti-ART5 antibody: synthetic peptide directed towards the middle region of human ART5. Synthetic peptide located within the following region: VFPKEREVLIPPHEVFLVTRFSQDGAQSLVTLWSYNQTCSHFNCAYLGGE
Formulation:	Liquid. Purified antibody supplied in 1x PBS buffer with 0.09% (w/v) sodium azide and 2% sucrose. <i>Note that this product is shipped as lyophilized powder to China customers.</i>
Conjugation:	Unconjugated
Storage:	Store at -20°C as received.
Stability:	Stable for 12 months from date of receipt.
Predicted Protein Size:	30 kDa
Gene Name:	ADP-ribosyltransferase 5
Database Link:	<a href="#">NP_001073004</a> <a href="#">Entrez Gene 116969 Human Q96L15</a>
Background:	The specific function of the protein remains unknown. The protein encoded by this gene belongs to the ARG-specific ADP-ribosyltransferase family. Proteins in this family regulate the function of target proteins by attaching ADP-ribose to specific amino acid residues in their target proteins. The mouse homolog lacks a glycosylphosphatidylinositol-anchor signal sequence and is predicted to be a secretory enzyme. Transcript variants with different 5' UTRs, but encoding the same protein have been found for this gene.
Synonyms:	ARTC5

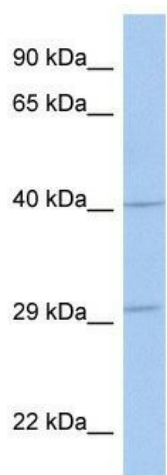


[View online »](#)

**Note:** Immunogen sequence homology: Horse: 100%; Human: 100%; Dog: 93%; Rabbit: 93%; Rat: 86%; Mouse: 86%; Pig: 79%

**Protein Families:** Secreted Protein

**Product images:**



WB Suggested Anti-ART5 Antibody Titration: 0.2-1 ug/ml; ELISA Titer: 1:62500; Positive Control: PANC1 cell lysate