

Product datasheet for **TA329569**

ART5 Rabbit Polyclonal Antibody

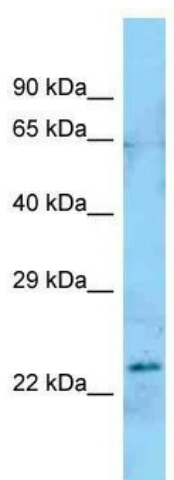
Product data:

Product Type:	Primary Antibodies
Applications:	WB
Recommended Dilution:	WB
Reactivity:	Human
Host:	Rabbit
Isotype:	IgG
Clonality:	Polyclonal
Immunogen:	The immunogen for Anti-ART5 antibody is: synthetic peptide directed towards the N-terminal region of Human ART5. Synthetic peptide located within the following region: HALLRESWEAAQETWEDKRRGLTLPFGKAQNGIAIMVYTNSNTLYWEL
Formulation:	Liquid. Purified antibody supplied in 1x PBS buffer with 0.09% (w/v) sodium azide and 2% sucrose.
Purification:	Affinity Purified
Conjugation:	Unconjugated
Storage:	Store at -20°C as received.
Stability:	Stable for 12 months from date of receipt.
Predicted Protein Size:	26 kDa
Gene Name:	ADP-ribosyltransferase 5
Database Link:	NP_001073004 Entrez Gene 116969 Human Q96L15
Background:	The function of this protein remains unknown.
Synonyms:	ARTC5
Note:	Immunogen sequence homology: Rat: 100%; Human: 100%; Dog: 92%; Pig: 92%; Horse: 92%; Guinea pig: 92%; Bovine: 91%; Rabbit: 85%
Protein Families:	Secreted Protein



[View online »](#)

Product images:



Host: Rabbit; Target Name: ART5; Sample Tissue:
Jurkat Whole cell lysates; Antibody Dilution:
1.0ug/ml