

## Product datasheet for TA329566

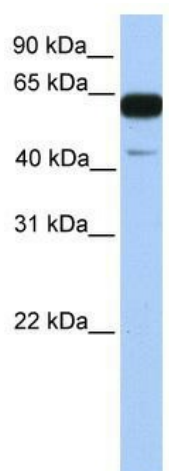
### PWWP2A Rabbit Polyclonal Antibody

#### Product data:

Product Type:	Primary Antibodies
Applications:	WB
Recommended Dilution:	WB
Reactivity:	Human
Host:	Rabbit
Isotype:	IgG
Clonality:	Polyclonal
Immunogen:	The immunogen for anti-PWWP2A antibody: synthetic peptide directed towards the C terminal of human PWWP2A. Synthetic peptide located within the following region: PQSRCTSTRSAGLNKWQLLHQTVTSPAAPLQCLTDHCGFRLGALKLTVKR
Formulation:	Liquid. Purified antibody supplied in 1x PBS buffer with 0.09% (w/v) sodium azide and 2% sucrose. <i>Note that this product is shipped as lyophilized powder to China customers.</i>
Conjugation:	Unconjugated
Storage:	Store at -20°C as received.
Stability:	Stable for 12 months from date of receipt.
Predicted Protein Size:	61 kDa
Gene Name:	PWWP domain containing 2A
Database Link:	<a href="#">NP_443159</a> <a href="#">Entrez Gene 114825 Human Q96N64</a>
Background:	PWWP2A contains 1 PWWP domain. The exact function of PWWP2A remains unknown.
Synonyms:	MST101
Note:	Immunogen sequence homology: Dog: 100%; Pig: 100%; Rat: 100%; Human: 100%; Mouse: 100%; Rabbit: 100%; Guinea pig: 100%; Horse: 93%



[View online »](#)

**Product images:**

WB Suggested Anti-PWWP2A Antibody Titration:  
0.2-1 ug/ml; Positive Control: Human brain