

Product datasheet for **TA329564**

MKRN3 Rabbit Polyclonal Antibody

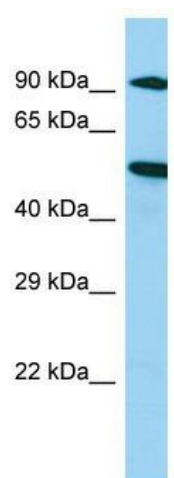
Product data:

Product Type:	Primary Antibodies
Applications:	WB
Recommended Dilution:	WB
Reactivity:	Rat
Host:	Rabbit
Isotype:	IgG
Clonality:	Polyclonal
Immunogen:	The immunogen for Anti-Mkrn3 antibody is: synthetic peptide directed towards the middle region of Rat Mkrn3. Synthetic peptide located within the following region: ARGGQDSQPRASADRGPKMATHWEPPTQEVAEAPPTASSSSLPLIGSAAE
Formulation:	Liquid. Purified antibody supplied in 1x PBS buffer with 0.09% (w/v) sodium azide and 2% sucrose.
Conjugation:	Unconjugated
Storage:	Store at -20°C as received.
Stability:	Stable for 12 months from date of receipt.
Predicted Protein Size:	57 kDa
Gene Name:	makorin ring finger protein 3
Database Link:	NP_005655 Entrez Gene 292988 Rat Q13064
Background:	The function of this protein remains unknown.
Synonyms:	CPPB2; D15S9; RNF63; ZFP127; ZNF127
Note:	Immunogen sequence homology: Human: 100%; Mouse: 100%; Rat: 93%; Rabbit: 93%; Pig: 92%; Guinea pig: 79%
Protein Families:	Druggable Genome



[View online »](#)

Product images:



Host: Rabbit; Target Name: Mkrn3; Sample
Tissue: Rat Spleen lysates; Antibody Dilution:
1.0ug/ml