

Product datasheet for **TA329562**

UBE2E1 Rabbit Polyclonal Antibody

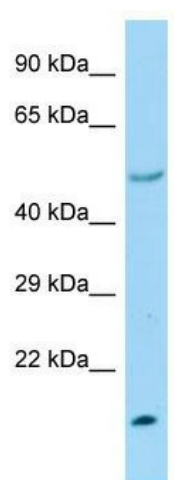
Product data:

Product Type:	Primary Antibodies
Applications:	WB
Recommended Dilution:	WB
Reactivity:	Rat
Host:	Rabbit
Isotype:	IgG
Clonality:	Polyclonal
Immunogen:	The immunogen for Anti-Ube2h antibody is: synthetic peptide directed towards the C-terminal region of Rat Ube2h. Synthetic peptide located within the following region: FESFLPQLLAYPNPIDPLNGDAAAMYLRPEEYKQKIKEYIQKYATEEAL
Formulation:	Liquid. Purified antibody supplied in 1x PBS buffer with 0.09% (w/v) sodium azide and 2% sucrose. <i>Note that this product is shipped as lyophilized powder to China customers.</i>
Conjugation:	Unconjugated
Storage:	Store at -20°C as received.
Stability:	Stable for 12 months from date of receipt.
Predicted Protein Size:	20 kDa
Gene Name:	ubiquitin conjugating enzyme E2 E1
Database Link:	NP_872607 Entrez Gene 7324 Human P51965
Background:	Ube2h is an E3 ubiquitin-protein ligase.
Synonyms:	UBCH6
Note:	Immunogen sequence homology: Dog: 100%; Pig: 100%; Rat: 100%; Horse: 100%; Human: 100%; Mouse: 100%; Bovine: 100%; Rabbit: 100%; Zebrafish: 100%; Guinea pig: 100%; Yeast: 85%
Protein Pathways:	Ubiquitin mediated proteolysis



[View online »](#)

Product images:



Host: Rabbit; Target Name: Ube2h; Sample
Tissue: Rat Heart lysates; Antibody Dilution:
1.0ug/ml