

Product datasheet for **TA329561**

Ube2h Rabbit Polyclonal Antibody

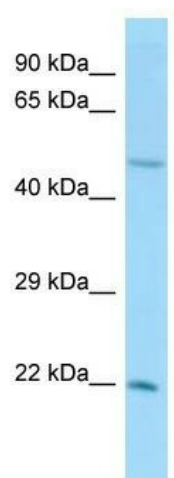
Product data:

Product Type:	Primary Antibodies
Applications:	WB
Recommended Dilution:	WB
Reactivity:	Mouse
Host:	Rabbit
Isotype:	IgG
Clonality:	Polyclonal
Immunogen:	The immunogen for Anti-Ube2h antibody is: synthetic peptide directed towards the N-terminal region of Mouse Ube2h. Synthetic peptide located within the following region: PSPGKRRMDTDVVKLIESKHEVTILGGLNEFVVKFYGPQGTPYEGGVWKV
Formulation:	Liquid. Purified antibody supplied in 1x PBS buffer with 0.09% (w/v) sodium azide and 2% sucrose. <i>Note that this product is shipped as lyophilized powder to China customers.</i>
Conjugation:	Unconjugated
Storage:	Store at -20°C as received.
Stability:	Stable for 12 months from date of receipt.
Predicted Protein Size:	21 kDa
Gene Name:	ubiquitin-conjugating enzyme E2H
Database Link:	NP_033485 Entrez Gene 22214 Mouse P62257
Background:	Ube2h accepts ubiquitin from the E1 complex and catalyzes its covalent attachment to other proteins. In vitro, it catalyzes 'Lys-11'- and 'Lys-48'-linked polyubiquitination. Capable, in vitro, to ubiquitinate histone H2A.
Synonyms:	E2-20K; UBC8; UBCH; UBCH2
Note:	Immunogen sequence homology: Dog: 100%; Pig: 100%; Rat: 100%; Horse: 100%; Human: 100%; Mouse: 100%; Yeast: 100%; Bovine: 100%; Rabbit: 100%; Zebrafish: 100%; Guinea pig: 100%; Goat: 82%



[View online »](#)

Product images:



Host: Rabbit; Target Name: Ube2h; Sample
Tissue: Mouse Testis lysates; Antibody Dilution:
1.0ug/ml