

Product datasheet for **TA329559**

RFFL Rabbit Polyclonal Antibody

Product data:

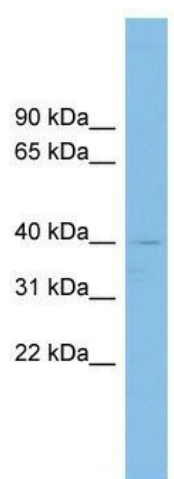
Product Type:	Primary Antibodies
Applications:	WB
Recommended Dilution:	WB
Reactivity:	Human
Host:	Rabbit
Isotype:	IgG
Clonality:	Polyclonal
Immunogen:	The immunogen for anti-RFFL antibody: synthetic peptide directed towards the middle region of human RFFL. Synthetic peptide located within the following region: KDQKGLQLHLVSGAEDQNGGAVPSGLEENLCKICMDSPIDCVLLECGHMVT
Formulation:	Liquid. Purified antibody supplied in 1x PBS buffer with 0.09% (w/v) sodium azide and 2% sucrose. <i>Note that this product is shipped as lyophilized powder to China customers.</i>
Conjugation:	Unconjugated
Storage:	Store at -20°C as received.
Stability:	Stable for 12 months from date of receipt.
Predicted Protein Size:	40 kDa
Gene Name:	ring finger and FYVE-like domain containing E3 ubiquitin protein ligase
Database Link:	NP_476519 Entrez Gene 117584 Human Q8WZ73
Background:	RFFL has E3 ubiquitin protein ligase activity. RFFL regulates the levels of CASP8 and CASP10 by targeting them for proteasomal degradation. Has anti-apoptotic activity. RFFL may bind phosphatidylinositol phosphates.
Synonyms:	CARP2; fring; FYVE-RING finger protein SAKURA; RIFIFYLIN; ring finger and FYVE-like domain containing 1; RNF34L; RNF189
Note:	Immunogen sequence homology: Rat: 100%; Horse: 100%; Human: 100%; Mouse: 100%; Rabbit: 100%; Dog: 93%; Pig: 93%; Bovine: 93%; Guinea pig: 93%



[View online »](#)

Protein Families: Druggable Genome

Product images:



WB Suggested Anti-RFFL Antibody Titration: 0.2-1 ug/ml; ELISA Titer: 1:312500; Positive Control: THP-1 cell lysate