

Product datasheet for **TA329558**

Rag1 Rabbit Polyclonal Antibody

Product data:

Product Type:	Primary Antibodies
Applications:	WB
Recommended Dilution:	WB
Reactivity:	Mouse
Host:	Rabbit
Isotype:	IgG
Clonality:	Polyclonal
Immunogen:	The immunogen for anti-Rag1 antibody: synthetic peptide corresponding to a region of Mouse. Synthetic peptide located within the following region: IIERDGSIGAWASEGNESGNKLFRRFRKMNARQSKCYEMEDVLKHHWLYT
Formulation:	Liquid. Purified antibody supplied in 1x PBS buffer with 0.09% (w/v) sodium azide and 2% sucrose. <i>Note that this product is shipped as lyophilized powder to China customers.</i>
Conjugation:	Unconjugated
Storage:	Store at -20°C as received.
Stability:	Stable for 12 months from date of receipt.
Predicted Protein Size:	119 kDa
Gene Name:	recombination activating gene 1
Database Link:	NP_033045 Entrez Gene 19373 Mouse P15919
Background:	As a catalytic component of the RAG complex, a multiprotein complex that mediates the DNA cleavage phase during V(D)J recombination. V(D)J recombination assembles a diverse repertoire of immunoglobulin and T-cell receptor genes in developing B and T lymphocytes through rearrangement of different V (variable), in some cases D (diversity), and J (joining) gene segments. In the RAG complex, RAG1 mediates the DNA-binding to the conserved recombination signal sequences (RSS) and catalyzes the DNA cleavage activities by introducing a double-strand break between the RSS and the adjacent coding segment. RAG2 is not a catalytic component but is required for all known catalytic activities.

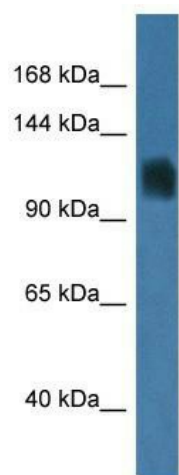


[View online »](#)

Synonyms: MGC43321; RAG-1; RNF74

Note: Immunogen sequence homology: Pig: 100%; Rat: 100%; Horse: 100%; Mouse: 100%

Product images:



WB Suggested Anti-Rag1 Antibody; Titration: 1.0 ug/ml; Positive Control: Mouse Liver