

Product datasheet for **TA329555**

Tmem178 Rabbit Polyclonal Antibody

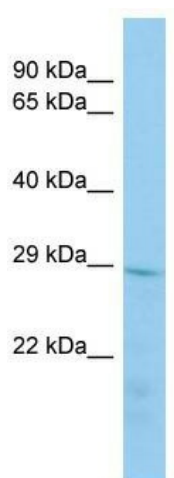
Product data:

Product Type:	Primary Antibodies
Applications:	WB
Recommended Dilution:	WB
Reactivity:	Mouse
Host:	Rabbit
Isotype:	IgG
Clonality:	Polyclonal
Immunogen:	The immunogen for Anti-Tmem178 antibody is: synthetic peptide directed towards the N-terminal region of Mouse Tmem178. Synthetic peptide located within the following region: PDQKNRLMPLSHLPLRDSPPPLGRRLLPGGPGRSDPESWRSLLGLGGLDAE
Formulation:	Liquid. Purified antibody supplied in 1x PBS buffer with 0.09% (w/v) sodium azide and 2% sucrose.
Conjugation:	Unconjugated
Storage:	Store at -20°C as received.
Stability:	Stable for 12 months from date of receipt.
Predicted Protein Size:	33 kDa
Gene Name:	transmembrane protein 178
Database Link:	NP_080792 Entrez Gene 68027 Mouse Q9CZ16
Background:	The function of this protein remains unknown.
Synonyms:	MGC33926
Note:	Immunogen sequence homology: Dog: 100%; Rat: 100%; Human: 100%; Mouse: 100%; Bovine: 100%; Rabbit: 100%



[View online »](#)

Product images:



Host: Rabbit; Target Name: Tmem178; Sample
Tissue: Mouse Stomach lysates; Antibody
Dilution: 1.0ug/ml