

## Product datasheet for **TA329551**

### Parp8 Rabbit Polyclonal Antibody

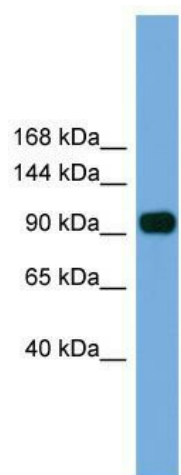
#### Product data:

Product Type:	Primary Antibodies
Applications:	WB
Recommended Dilution:	WB
Reactivity:	Mouse
Host:	Rabbit
Isotype:	IgG
Clonality:	Polyclonal
Immunogen:	The immunogen for anti-Parp8 antibody: synthetic peptide directed towards the N terminal of human Parp8. Synthetic peptide located within the following region: ITSETTSPSAPASARGIYLMGMCSRQERIQKDIDVVIQKSRAEKDCLFAD
Formulation:	Liquid. Purified antibody supplied in 1x PBS buffer with 0.09% (w/v) sodium azide and 2% sucrose. <i>Note that this product is shipped as lyophilized powder to China customers.</i>
Conjugation:	Unconjugated
Storage:	Store at -20°C as received.
Stability:	Stable for 12 months from date of receipt.
Predicted Protein Size:	99 kDa
Gene Name:	poly (ADP-ribose) polymerase family, member 8
Database Link:	<a href="#">NP_001074478</a> <a href="#">Entrez Gene 52552 Mouse</a> <a href="#">Q3UD82</a>
Background:	The function of Parp8 remains unknown.
Synonyms:	FLJ21308; MGC42864; PARP-8
Note:	Immunogen sequence homology: Dog: 100%; Pig: 100%; Rat: 100%; Horse: 100%; Human: 100%; Mouse: 100%; Bovine: 100%; Rabbit: 100%; Guinea pig: 100%; Zebrafish: 86%



[View online »](#)

## Product images:



WB Suggested Anti-Parp8 Antibody Titration: 0.2-1 ug/ml; ELISA Titer: 1:62500; Positive Control: Mouse Kidney