

## Product datasheet for **TA329550**

### Alx1 Rabbit Polyclonal Antibody

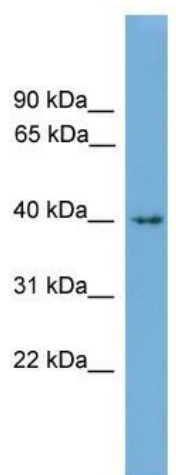
#### Product data:

Product Type:	Primary Antibodies
Applications:	WB
Recommended Dilution:	WB
Reactivity:	Mouse
Host:	Rabbit
Isotype:	IgG
Clonality:	Polyclonal
Immunogen:	The immunogen for anti-Alx1 antibody: synthetic peptide corresponding to a region of Mouse. Synthetic peptide located within the following region: MEFLSEKFALKSPPSKNSDFYMGTTGGALEHVMETLDNESFYGKATAGKCV
Formulation:	Liquid. Purified antibody supplied in 1x PBS buffer with 0.09% (w/v) sodium azide and 2% sucrose. <i>Note that this product is shipped as lyophilized powder to China customers.</i>
Conjugation:	Unconjugated
Storage:	Store at -20°C as received.
Stability:	Stable for 12 months from date of receipt.
Predicted Protein Size:	37 kDa
Gene Name:	ALX homeobox 1
Database Link:	<a href="#">NP_766141</a> <a href="#">Entrez Gene 216285 Mouse</a> <a href="#">Q8C8B0</a>
Background:	Alx1 is a transcriptional activator that acts at a palindromic recognition sequence to enhance the activity of the SV40 and TK promoters. Alx1 may play a role in chondrocyte differentiation and may also influence cervix development.
Synonyms:	CART-1; CART1
Note:	Immunogen sequence homology: Pig: 100%; Rat: 100%; Horse: 100%; Human: 100%; Mouse: 100%; Bovine: 100%; Rabbit: 100%; Guinea pig: 93%



[View online »](#)

## Product images:



WB Suggested Anti-Alx1 Antibody Titration: 0.2-1 ug/ml; ELISA Titer: 1:312500; Positive Control: Mouse Heart