

Product datasheet for **TA329549**

Gjc3 Rabbit Polyclonal Antibody

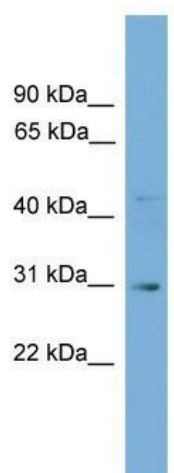
Product data:

Product Type:	Primary Antibodies
Applications:	WB
Recommended Dilution:	WB
Reactivity:	Mouse
Host:	Rabbit
Isotype:	IgG
Clonality:	Polyclonal
Immunogen:	The immunogen for anti-Gje1 antibody: synthetic peptide corresponding to a region of Mouse. Synthetic peptide located within the following region: GFRLILVSSGPGVFGNDENEFICHLGQPGCKTICYDVRPLSPLRFWAF
Formulation:	Liquid. Purified antibody supplied in 1x PBS buffer with 0.09% (w/v) sodium azide and 2% sucrose.
Conjugation:	Unconjugated
Storage:	Store at -20°C as received.
Stability:	Stable for 12 months from date of receipt.
Predicted Protein Size:	30 kDa
Gene Name:	gap junction protein, gamma 3
Database Link:	NP_536698 Entrez Gene 118446 Mouse Q921C1
Background:	One gap junction consists of a cluster of closely packed pairs of transmembrane channels, the connexons, through which materials of low MW diffuse from one cell to a neighboring cell.
Synonyms:	Connexin-30.2; Connexin-31.3; Cx29; CX30.2; Cx31.3; GJE1
Note:	Immunogen sequence homology: Rat: 100%; Mouse: 100%



[View online »](#)

Product images:



WB Suggested Anti-Gje1 Antibody Titration: 0.2-1 ug/ml; ELISA Titer: 1:62500; Positive Control: Mouse Spleen