

Product datasheet for **TA329548**

Anxa13 Rabbit Polyclonal Antibody

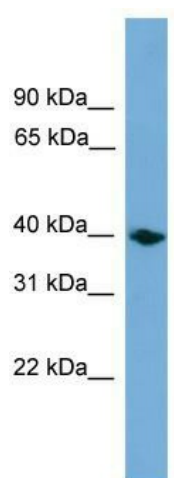
Product data:

Product Type:	Primary Antibodies
Applications:	WB
Recommended Dilution:	WB
Reactivity:	Mouse
Host:	Rabbit
Isotype:	IgG
Clonality:	Polyclonal
Immunogen:	The immunogen for anti-Anxa13 antibody: synthetic peptide corresponding to a region of Mouse. Synthetic peptide located within the following region: KILVSLQLQASRDEEDTVDKELAGQDAKDLVDAGEGRWGTDELAFNEVLAK
Formulation:	Liquid. Purified antibody supplied in 1x PBS buffer with 0.09% (w/v) sodium azide and 2% sucrose. <i>Note that this product is shipped as lyophilized powder to China customers.</i>
Conjugation:	Unconjugated
Storage:	Store at -20°C as received.
Stability:	Stable for 12 months from date of receipt.
Predicted Protein Size:	36 kDa
Gene Name:	annexin A13
Database Link:	NP_081487 Entrez Gene 69787 Mouse Q99JG3
Background:	The function of Anxa13 remains unknown.
Synonyms:	Annexin-13; ANX13; ISA; MGC150460
Note:	Immunogen sequence homology: Pig: 100%; Rat: 100%; Horse: 100%; Human: 100%; Mouse: 100%; Dog: 93%; Bovine: 93%; Rabbit: 93%; Guinea pig: 93%; Sheep: 90%; Zebrafish: 77%



[View online »](#)

Product images:



WB Suggested Anti-Anxa13 Antibody Titration:
0.2-1 ug/ml; ELISA Titer: 1:62500; Positive Control:
Mouse Muscle