

Product datasheet for **TA329547**

Rgs10 Rabbit Polyclonal Antibody

Product data:

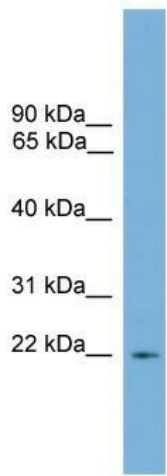
Product Type:	Primary Antibodies
Applications:	FC, WB
Recommended Dilution:	WB, FACS
Reactivity:	Mouse
Host:	Rabbit
Isotype:	IgG
Clonality:	Polyclonal
Immunogen:	The immunogen for anti-Rgs10 antibody: synthetic peptide corresponding to a region of Mouse. Synthetic peptide located within the following region: MFTRAVSRLSRKRPPSDIHDGDGSSSSGHQSLKSTAKWASSLENLLEDPE
Formulation:	Liquid. Purified antibody supplied in 1x PBS buffer with 0.09% (w/v) sodium azide and 2% sucrose. <i>Note that this product is shipped as lyophilized powder to China customers.</i>
Conjugation:	Unconjugated
Storage:	Store at -20°C as received.
Stability:	Stable for 12 months from date of receipt.
Predicted Protein Size:	21 kDa
Gene Name:	regulator of G-protein signalling 10
Database Link:	NP_080694 Entrez Gene 67865 Mouse Q9CQE5
Background:	Rgs10 inhibits signal transduction by increasing the GTPase activity of G protein alpha subunits thereby driving them into their inactive GDP-bound form. Rgs10 associates specifically with the activated forms of the G protein subunits G(i)-alpha and G(z)-alpha but fails to interact with the structurally and functionally distinct G(s)-alpha subunit. Activity of Rgs10 on G(z)-alpha is inhibited by palmitoylation of the G-protein.
Synonyms:	RGS10



[View online »](#)

Note: Immunogen sequence homology: Rat: 100%; Mouse: 100%; Pig: 93%; Human: 93%; Bovine: 93%

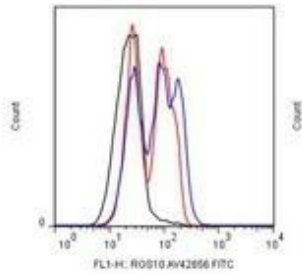
Product images:



WB Suggested Anti-Rgs10 Antibody Titration: 0.2-1 ug/ml; ELISA Titer: 1:1562500; Positive Control: Mouse Thymus

1 ug/ml primary Ab
Rb anti GT secondary Ab

— Isotype
— WT
— KO



Submitted by:
Malu Tansey
Physiology Dept
Emory University

FACS -- Sample type: Bone marrow derived monocytes from mice BV2 cells Dilution: 1 ug/mL