

Product datasheet for **TA329546**

Rgs18 Rabbit Polyclonal Antibody

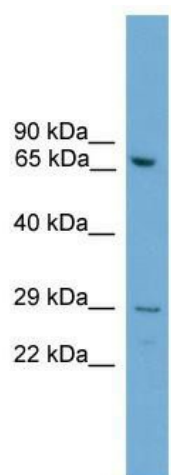
Product data:

Product Type:	Primary Antibodies
Applications:	WB
Recommended Dilution:	WB
Reactivity:	Mouse
Host:	Rabbit
Isotype:	IgG
Clonality:	Polyclonal
Immunogen:	The immunogen for anti-Rgs18 antibody: synthetic peptide corresponding to a region of Mouse. Synthetic peptide located within the following region: AKEKRNRLSLLLQRPDFHGETQASRSALLAKETRVSPPEAVKWAESFDKL
Formulation:	Liquid. Purified antibody supplied in 1x PBS buffer with 0.09% (w/v) sodium azide and 2% sucrose. <i>Note that this product is shipped as lyophilized powder to China customers.</i>
Conjugation:	Unconjugated
Storage:	Store at -20°C as received.
Stability:	Stable for 12 months from date of receipt.
Predicted Protein Size:	27 kDa
Gene Name:	regulator of G-protein signaling 18
Database Link:	NP_075019 Entrez Gene 64214 Mouse Q99PG4
Background:	Rgs18 inhibits signal transduction by increasing the GTPase activity of G protein alpha subunits thereby driving them into their inactive GDP-bound form. Rgs18 binds to G(i) alpha-1, G(i) alpha-2, G(i) alpha-3 and G(q) alpha.
Synonyms:	RGS13
Note:	Immunogen sequence homology: Mouse: 100%; Rat: 86%



[View online »](#)

Product images:



WB Suggested Anti-Rgs18 Antibody Titration: 0.2-1 ug/ml; ELISA Titer: 1:312500; Positive Control: Mouse Lung