

## Product datasheet for TA329545

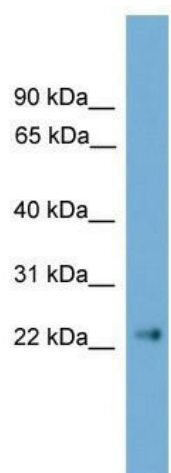
### Cldn6 Rabbit Polyclonal Antibody

#### Product data:

|                         |  |
|-------------------------|--|
| Product Type:           | Primary Antibodies   |
| Applications:           | WB   |
| Recommended Dilution:   | WB   |
| Reactivity:             | Mouse  |
| Host:                   | Rabbit   |
| Isotype:                | IgG  |
| Clonality:              | Polyclonal   |
| Immunogen:              | The immunogen for anti-Cldn6 antibody: synthetic peptide corresponding to a region of Mouse. Synthetic peptide located within the following region:<br>GASLYLGWAASGLLLLGGGLCCACSSGGTQGPRHYMACYSTSVPHSRGP |
| Formulation:            | Liquid. Purified antibody supplied in 1x PBS buffer with 0.09% (w/v) sodium azide and 2% sucrose.<br><i>Note that this product is shipped as lyophilized powder to China customers.</i>                  |
| Conjugation:            | Unconjugated   |
| Storage:                | Store at -20°C as received.  |
| Stability:              | Stable for 12 months from date of receipt.   |
| Predicted Protein Size: | 23 kDa   |
| Gene Name:              | claudin 6  |
| Database Link:          | <a href="#">NP_061247</a><br><a href="#">Entrez Gene 54419 Mouse</a><br><a href="#">Q9Z262</a>   |
| Background:             | Cldn6 plays a major role in tight junction-specific obliteration of the intercellular space, through calcium-independent cell-adhesion activity.   |
| Synonyms:               | OTTHUMP00000159248   |
| Note:                   | Immunogen sequence homology: Human: 100%; Mouse: 100%; Rabbit: 100%; Rat: 93%; Pig: 88%; Bovine: 88%; Guinea pig: 88%; Horse: 81%  |



[View online »](#)

**Product images:**

WB Suggested Anti-Cldn6 Antibody Titration: 0.2-1 ug/ml; ELISA Titer: 1:312500; Positive Control: Mouse Heart