

Product datasheet for TA329543

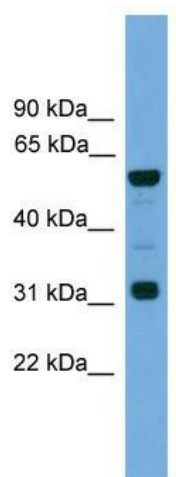
Gja10 Rabbit Polyclonal Antibody

Product data:

Product Type:	Primary Antibodies
Applications:	WB
Recommended Dilution:	WB
Reactivity:	Mouse
Host:	Rabbit
Isotype:	IgG
Clonality:	Polyclonal
Immunogen:	The immunogen for anti-Gja10 antibody: synthetic peptide corresponding to a region of Mouse. Synthetic peptide located within the following region: MGDWNLLGGILEEVHSHSTIVGKIWLTLFIFRMLVLGVAAEDVWDDEQS
Formulation:	Liquid. Purified antibody supplied in 1x PBS buffer with 0.09% (w/v) sodium azide and 2% sucrose.
Conjugation:	Unconjugated
Storage:	Store at -20°C as received.
Stability:	Stable for 12 months from date of receipt.
Predicted Protein Size:	57 kDa
Gene Name:	gap junction protein, alpha 10
Database Link:	NP_034419 Entrez Gene 14610 Mouse Q9WUS4
Background:	One gap junction consists of a cluster of closely packed pairs of transmembrane channels, the connexons, through which materials of low MW diffuse from one cell to a neighboring cell. Gja10 is involved in tracer coupling between horizontal cells of the retina. Gja10 may play a role in the regulation of horizontal cell patterning.
Synonyms:	Connexin-62; CX62; RP11-63K6.6
Note:	Immunogen sequence homology: Dog: 100%; Rat: 100%; Horse: 100%; Human: 100%; Mouse: 100%; Pig: 93%; Bovine: 93%; Rabbit: 93%; Zebrafish: 86%


[View online »](#)

Product images:



WB Suggested Anti-Gja10 Antibody Titration: 0.2-1 ug/ml; Positive Control: Mouse Heart