

Product datasheet for TA329542

Cldn3 Rabbit Polyclonal Antibody

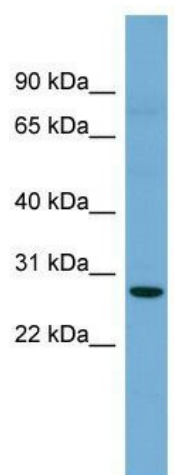
Product data:

Product Type:	Primary Antibodies
Applications:	WB
Recommended Dilution:	WB
Reactivity:	Mouse
Host:	Rabbit
Isotype:	IgG
Clonality:	Polyclonal
Immunogen:	The immunogen for anti-Cldn3 antibody: synthetic peptide corresponding to a region of Mouse. Synthetic peptide located within the following region: VPEAQKREMGAGLYVGWAAAALQLLGGALLCCSCPPRDKYAPTKILYSAP
Formulation:	Liquid. Purified antibody supplied in 1x PBS buffer with 0.09% (w/v) sodium azide and 2% sucrose. <i>Note that this product is shipped as lyophilized powder to China customers.</i>
Conjugation:	Unconjugated
Storage:	Store at -20°C as received.
Stability:	Stable for 12 months from date of receipt.
Predicted Protein Size:	23 kDa
Gene Name:	claudin 3
Database Link:	NP_034032 Entrez Gene 12739 Mouse Q9Z0G9
Background:	Cldn3 plays a major role in tight junction-specific obliteration of the intercellular space, through calcium-independent cell-adhesion activity.
Synonyms:	C7orf1; CPE-R2; CPETR2; HRVP1; RVP1
Note:	Immunogen sequence homology: Mouse: 100%; Rat: 93%; Dog: 87%; Bovine: 79%



[View online »](#)

Product images:



WB Suggested Anti-Cldn3 Antibody Titration:
0.125 ug/ml; ELISA Titer: 1:1562500; Positive
Control: Mouse Liver