

## Product datasheet for **TA329540**

### Gjb3 Rabbit Polyclonal Antibody

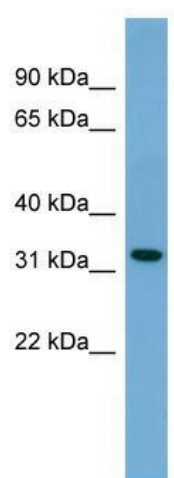
#### Product data:

Product Type:	Primary Antibodies
Applications:	WB
Recommended Dilution:	WB
Reactivity:	Mouse
Host:	Rabbit
Isotype:	IgG
Clonality:	Polyclonal
Immunogen:	The immunogen for anti-Gjb3 antibody: synthetic peptide corresponding to a region of Mouse. Synthetic peptide located within the following region: MDWKKLQDLLSGVNQYSTAFGRIWLSVVFVFRVLVYVVAERVWGDEQKD
Formulation:	Liquid. Purified antibody supplied in 1x PBS buffer with 0.09% (w/v) sodium azide and 2% sucrose. <i>Note that this product is shipped as lyophilized powder to China customers.</i>
Conjugation:	Unconjugated
Storage:	Store at -20°C as received.
Stability:	Stable for 12 months from date of receipt.
Predicted Protein Size:	31 kDa
Gene Name:	gap junction protein, beta 3
Database Link:	<a href="#">NP_032152</a> <a href="#">Entrez Gene 14620 Mouse P28231</a>
Background:	One gap junction consists of a cluster of closely packed pairs of transmembrane channels, the connexons, through which materials of low MW diffuse from one cell to a neighboring cell.
Synonyms:	Connexin-31; CX31; DFNA2; DFNA2B; EKV; FLJ22486; MGC102938
Note:	Immunogen sequence homology: Rat: 100%; Mouse: 100%; Zebrafish: 92%; Dog: 83%; Pig: 83%; Horse: 83%; Human: 83%; Bovine: 79%; Rabbit: 79%



[View online »](#)

## Product images:



WB Suggested Anti-Gjb3 Antibody Titration: 0.125 ug/ml; ELISA Titer: 1:1562500; Positive Control: SP2/0 cell lysate