

## Product datasheet for **TA329539**

### Gja8 Rabbit Polyclonal Antibody

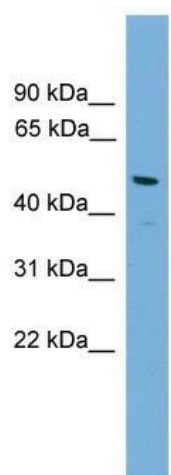
#### Product data:

Product Type:	Primary Antibodies
Applications:	WB
Recommended Dilution:	WB
Reactivity:	Mouse, Rat
Host:	Rabbit
Isotype:	IgG
Clonality:	Polyclonal
Immunogen:	The immunogen for anti-Gja8 antibody: synthetic peptide corresponding to a region of Mouse. Synthetic peptide located within the following region: MGDWSFLGNILEEVNEHSTVIGRVWLTVLFIFRILILGTAAEFVWGDEQS
Formulation:	Liquid. Purified antibody supplied in 1x PBS buffer with 0.09% (w/v) sodium azide and 2% sucrose. <i>Note that this product is shipped as lyophilized powder to China customers.</i>
Conjugation:	Unconjugated
Storage:	Store at -20°C as received.
Stability:	Stable for 12 months from date of receipt.
Predicted Protein Size:	49 kDa
Gene Name:	gap junction protein, alpha 8
Database Link:	<a href="#">NP_032149</a> <a href="#">Entrez Gene 29601 Rat</a> <a href="#">Entrez Gene 14616 Mouse</a> <a href="#">P28236</a>
Background:	One gap junction consists of a cluster of closely packed pairs of transmembrane channels, the connexons, through which materials of low MW diffuse from one cell to a neighboring cell.
Synonyms:	CAE; CAE1; Connexin-50; CX50; CZP1; MP70; OTTHUMP00000025757
Note:	Immunogen sequence homology: Dog: 100%; Pig: 100%; Rat: 100%; Horse: 100%; Human: 100%; Mouse: 100%; Sheep: 100%; Bovine: 100%; Rabbit: 100%; Zebrafish: 100%; Guinea pig: 100%; Yeast: 82%



[View online »](#)

## Product images:



WB Suggested Anti-Gja8 Antibody Titration: 0.2-1 ug/ml; Positive Control: Mouse Uterus