

## Product datasheet for **TA329538**

### PARP10 Rabbit Polyclonal Antibody

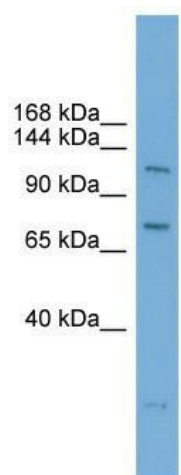
#### Product data:

Product Type:	Primary Antibodies
Applications:	WB
Recommended Dilution:	WB
Reactivity:	Human
Host:	Rabbit
Isotype:	IgG
Clonality:	Polyclonal
Immunogen:	The immunogen for anti-PARP10 antibody: synthetic peptide directed towards the N terminal of human PARP10. Synthetic peptide located within the following region: EPEELAENTSGGDHPSTQGPRATKHALLRTGGLVTALQGAGVTMGSCEE
Formulation:	Liquid. Purified antibody supplied in 1x PBS buffer with 0.09% (w/v) sodium azide and 2% sucrose.
Conjugation:	Unconjugated
Storage:	Store at -20°C as received.
Stability:	Stable for 12 months from date of receipt.
Predicted Protein Size:	112 kDa
Gene Name:	poly(ADP-ribose) polymerase family member 10
Database Link:	<a href="#">NP_116178</a> <a href="#">Entrez Gene 84875 Human</a> <a href="#">Q53GL7</a>
Background:	Poly(ADP-ribose) polymerases (PARPs), such as PARP10, regulate gene transcription by altering chromatin organization by adding ADP-ribose to histones. PARPs can also function as transcriptional cofactors.
Synonyms:	ARTD10
Note:	Immunogen sequence homology: Human: 100%; Rat: 83%



[View online »](#)

Product images:



WB Suggested Anti-PARP10 Antibody Titration:  
0.2-1 ug/ml; Positive Control: THP-1 cell lysate