

Product datasheet for TA329537

ETV2 Rabbit Polyclonal Antibody

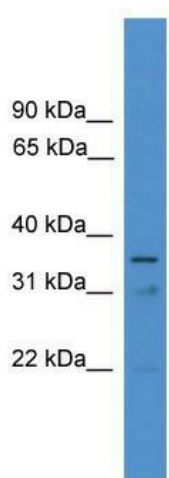
Product data:

Product Type:	Primary Antibodies
Applications:	WB
Recommended Dilution:	WB
Reactivity:	Human
Host:	Rabbit
Isotype:	IgG
Clonality:	Polyclonal
Immunogen:	The immunogen for anti-ETV2 antibody: synthetic peptide directed towards the N terminal of human ETV2. Synthetic peptide located within the following region: DTPATAETCWKGTSSSLASFPQLDWGSALLHPEVPWGAEPDSQALPWSG
Formulation:	Liquid. Purified antibody supplied in 1x PBS buffer with 0.09% (w/v) sodium azide and 2% sucrose. <i>Note that this product is shipped as lyophilized powder to China customers.</i>
Conjugation:	Unconjugated
Storage:	Store at -20°C as received.
Stability:	Stable for 12 months from date of receipt.
Predicted Protein Size:	37 kDa
Gene Name:	ETS variant 2
Database Link:	NP_055024 Entrez Gene 2116 Human O00321
Background:	The function of ETV2 remains unknown.
Synonyms:	ER71; ETSRP71
Note:	Immunogen sequence homology: Human: 100%
Protein Families:	ES Cell Differentiation/IPS



[View online »](#)

Product images:



WB Suggested Anti-ETV2 Antibody Titration: 0.2-1 ug/ml; ELISA Titer: 1:62500; Positive Control: 721_B cell lysate