

Product datasheet for **TA329536**

RGS18 Rabbit Polyclonal Antibody

Product data:

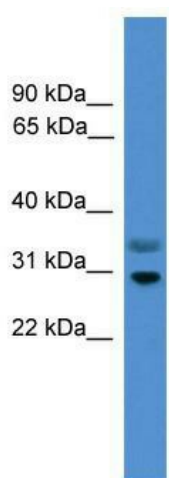
Product Type:	Primary Antibodies
Applications:	WB
Recommended Dilution:	WB
Reactivity:	Human
Host:	Rabbit
Isotype:	IgG
Clonality:	Polyclonal
Immunogen:	The immunogen for anti-RGS18 antibody: synthetic peptide directed towards the middle region of human RGS18. Synthetic peptide located within the following region: EDFKKSKGPQQIHLKAKAIYEKFIQTDAPKEVNLD FHTKEVITNSITQPT
Formulation:	Liquid. Purified antibody supplied in 1x PBS buffer with 0.09% (w/v) sodium azide and 2% sucrose. <i>Note that this product is shipped as lyophilized powder to China customers.</i>
Conjugation:	Unconjugated
Storage:	Store at -20°C as received.
Stability:	Stable for 12 months from date of receipt.
Predicted Protein Size:	27 kDa
Gene Name:	regulator of G-protein signaling 18
Database Link:	NP_570138 Entrez Gene 64407 Human Q9NS28
Background:	RGS18 is a member of the regulator of G-protein signaling family. This protein contains a conserved, 120 amino acid motif called the RGS domain. The protein attenuates the signaling activity of G-proteins by binding to activated, GTP-bound G alpha subunits and acting as a GTPase activating protein (GAP), increasing the rate of conversion of the GTP to GDP. This hydrolysis allows the G alpha subunits to bind G beta/gamma subunit heterodimers, forming inactive G-protein heterotrimers, thereby terminating the signal.
Synonyms:	RGS13



[View online »](#)

Note: Immunogen sequence homology: Human: 100%; Rat: 86%; Horse: 86%; Pig: 79%; Guinea pig: 79%

Product images:



WB Suggested Anti-RGS18 Antibody Titration: 0.2-1 ug/ml; ELISA Titer: 1:312500; Positive Control: HepG2 cell lysate