

## Product datasheet for **TA329534**

### Pannexin 3 (PANX3) Rabbit Polyclonal Antibody

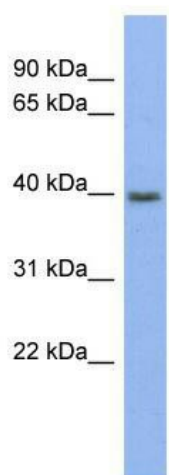
#### Product data:

Product Type:	Primary Antibodies
Applications:	WB
Recommended Dilution:	WB
Reactivity:	Human
Host:	Rabbit
Isotype:	IgG
Clonality:	Polyclonal
Immunogen:	The immunogen for anti-PANX3 antibody: synthetic peptide directed towards the middle region of human PANX3. Synthetic peptide located within the following region: IISELDKSYNRSIRLVQHMLKIRQKSSDPYVFWNELEKARKERYFEFPLL
Formulation:	Liquid. Purified antibody supplied in 1x PBS buffer with 0.09% (w/v) sodium azide and 2% sucrose. <i>Note that this product is shipped as lyophilized powder to China customers.</i>
Conjugation:	Unconjugated
Storage:	Store at -20°C as received.
Stability:	Stable for 12 months from date of receipt.
Predicted Protein Size:	45 kDa
Gene Name:	pannexin 3
Database Link:	<a href="#">NP_443191</a> <a href="#">Entrez Gene 116337 Human</a> <a href="#">Q96QZ0</a>
Background:	The protein encoded by this gene belongs to the innexin family. Innexin family members are known to be the structural components of gap junctions.
Synonyms:	PX3
Note:	Immunogen sequence homology: Dog: 100%; Pig: 100%; Rat: 100%; Horse: 100%; Human: 100%; Mouse: 100%; Rabbit: 100%; Guinea pig: 100%; Bovine: 93%; Zebrafish: 86%
Protein Families:	Transmembrane



[View online »](#)

## Product images:



WB Suggested Anti-PANX3 Antibody Titration: 0.2-1 ug/ml; ELISA Titer: 1:312500; Positive Control: Human Spleen