

Product datasheet for **TA329532**

Rapgef2 Rabbit Polyclonal Antibody

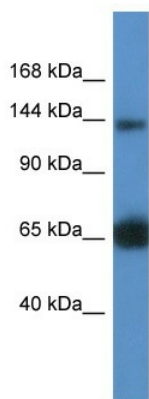
Product data:

Product Type:	Primary Antibodies
Recommended Dilution:	WB
Reactivity:	Human, Mouse
Host:	Rabbit
Isotype:	IgG
Clonality:	Polyclonal
Immunogen:	The immunogen for anti-Rapgef2 antibody: synthetic peptide corresponding to a region of Mouse. Synthetic peptide located within the following region: SILPQKPYNDIGIGSQDSDSIVGLRQTKHIPAALPVSGTLSSSNPDLLQS
Formulation:	Liquid. Purified antibody supplied in 1x PBS buffer with 0.09% (w/v) sodium azide and 2% sucrose.
Conjugation:	Unconjugated
Storage:	Store at -20°C as received.
Stability:	Stable for 12 months from date of receipt.
Predicted Protein Size:	150 kDa
Gene Name:	Rap guanine nucleotide exchange factor (GEF) 2
Database Link:	NP_001093094 Entrez Gene 9693 Human Entrez Gene 76089 Mouse
Background:	The function remains unknown.
Synonyms:	CNrasGEF; DKFZP586O1422; KIAA0313; NRAPGEP; PDZ-GEF1; PDZGEF1; RA(Ras/Rap1A-associating)-GEF; RA-GEF; Rap-GEP
Note:	Immunogen sequence homology: Dog: 100%; Pig: 100%; Rat: 100%; Horse: 100%; Human: 100%; Mouse: 100%; Bovine: 100%; Rabbit: 100%; Guinea pig: 100%; Zebrafish: 86%

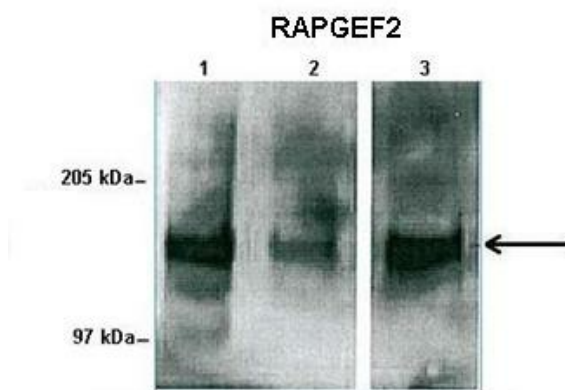


[View online »](#)

Product images:



WB Suggested Anti-Rapgef2 Antibody
Titration: 1.0 ug/ml
Positive Control: Mouse Kidney



Human sperm and mouse liver

See Immunoblot 2 Data and Customer Feedback for more information