

Product datasheet for **TA329531**

Rapgef2 Rabbit Polyclonal Antibody

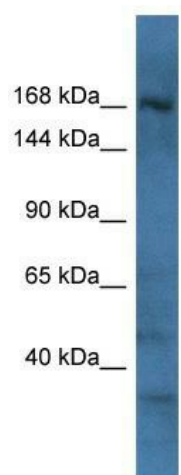
Product data:

Product Type:	Primary Antibodies
Applications:	WB
Recommended Dilution:	WB
Reactivity:	Mouse, Human
Host:	Rabbit
Clonality:	Polyclonal
Immunogen:	The immunogen for Anti-Rapgef2 antibody is: synthetic peptide directed towards the C-terminal region of Mouse Rapgef2. Synthetic peptide located within the following region: GHTHFDYSGDAASIWASGGHMDQMMFSDHSTKYNRQNQSRESLEQAQSRA
Formulation:	Liquid. Purified antibody supplied in 1x PBS buffer with 0.09% (w/v) sodium azide and 2% sucrose. <i>Note that this product is shipped as lyophilized powder to China customers.</i>
Conjugation:	Unconjugated
Storage:	Store at -20°C as received.
Stability:	Stable for 12 months from date of receipt.
Predicted Protein Size:	164 kDa
Gene Name:	Rap guanine nucleotide exchange factor (GEF) 2
Database Link:	NP_001093094 Entrez Gene 9693 Human Entrez Gene 76089 Mouse
Background:	Rapgef2 is a Guanine nucleotide exchange factor (GEF) for Rap1, Rap1B and Rap2 GTPases.
Synonyms:	CNrasGEF; DKFZP586O1422; KIAA0313; NRAPGEP; PDZ-GEF1; PDZGEF1; RA(Ras/Rap1A-associating)-GEF; RA-GEF; Rap-GEP
Note:	Immunogen sequence homology: Dog: 100%; Rat: 100%; Horse: 100%; Human: 100%; Mouse: 100%; Rabbit: 100%; Pig: 93%; Bovine: 79%



[View online »](#)

Product images:



Host: Rabbit; Target Name: Rapgef2; Sample
Tissue: Mouse Brain lysates; Antibody Dilution:
1.0ug/ml