

Product datasheet for **TA329528**

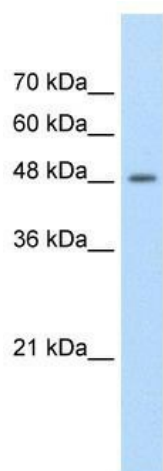
FAM174B Rabbit Polyclonal Antibody

Product data:

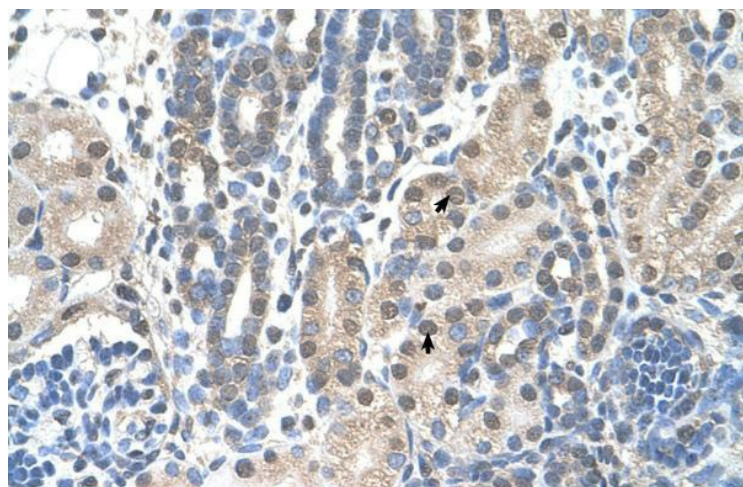
Product Type:	Primary Antibodies
Applications:	IHC, WB
Recommended Dilution:	WB, IHC
Reactivity:	Human
Host:	Rabbit
Isotype:	IgG
Clonality:	Polyclonal
Immunogen:	The immunogen for anti-FAM174B antibody: synthetic peptide directed towards the C terminal of human LOC400451. Synthetic peptide located within the following region: FTLLIACLLLRVFRSGKRLKKTRKYDIITTPAERVEMAPLNEDDEDED
Formulation:	Liquid. Purified antibody supplied in 1x PBS buffer with 0.09% (w/v) sodium azide and 2% sucrose.
Conjugation:	Unconjugated
Storage:	Store at -20°C as received.
Stability:	Stable for 12 months from date of receipt.
Predicted Protein Size:	17 kDa
Gene Name:	family with sequence similarity 174 member B
Database Link:	NP_997329 Entrez Gene 400451 Human Q3ZCQ3
Background:	The function remains unknown. Western blots using two different antibodies against two unique regions of this protein target confirm the same apparent molecular weight in our tests.
Synonyms:	MGC102891
Note:	Immunogen sequence homology: Dog: 100%; Pig: 100%; Rat: 100%; Horse: 100%; Human: 100%; Mouse: 100%; Yeast: 100%; Bovine: 100%; Guinea pig: 100%; Zebrafish: 79%
Protein Families:	Transmembrane


[View online »](#)

Product images:



WB Suggested Anti-FAM174B Antibody Titration:
1.25 ug/ml; Positive Control: Jurkat cell lysate



Human kidney