

Product datasheet for TA329526

IGSF1 Rabbit Polyclonal Antibody

Product data:

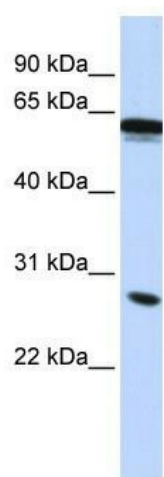
Product Type:	Primary Antibodies
Applications:	WB
Recommended Dilution:	WB
Reactivity:	Human
Host:	Rabbit
Isotype:	IgG
Clonality:	Polyclonal
Immunogen:	The immunogen for anti-IGSF1 antibody: synthetic peptide directed towards the middle region of human IGSF1. Synthetic peptide located within the following region: TMAIFSIDNLTPEDEGVYICRTHIQMLPTLWSEPSNPLKLVVAGGCGYGC
Formulation:	Liquid. Purified antibody supplied in 1x PBS buffer with 0.09% (w/v) sodium azide and 2% sucrose.
Conjugation:	Unconjugated
Storage:	Store at -20°C as received.
Stability:	Stable for 12 months from date of receipt.
Predicted Protein Size:	27 kDa
Gene Name:	immunoglobulin superfamily member 1
Database Link:	NP_991402 Entrez Gene 3547 Human Q8N6C5
Background:	This gene encodes a member of the immunoglobulin-like domain-containing superfamily. Proteins in this superfamily contain varying numbers of immunoglobulin-like domains and are thought to participate in the regulation of interactions between cells. Multiple transcript variants encoding different isoforms have been found for this gene. [provided by RefSeq, Jan 2010]
Synonyms:	CHTE; IGCD1; IGDC1; INHBP; p120; PGSF2
Note:	Immunogen sequence homology: Human: 100%; Pig: 86%; Mouse: 86%; Sheep: 86%; Rabbit: 86%; Guinea pig: 86%; Dog: 79%; Rat: 79%; Horse: 79%; Bovine: 79%



[View online »](#)

Protein Families: Transmembrane

Product images:



WB Suggested Anti-IGSF1 Antibody Titration: 0.2-1 ug/ml; ELISA Titer: 1:1562500; Positive Control: HepG2 cell lysate IGSF1 is supported by BioGPS gene expression data to be expressed in HepG2