

Product datasheet for **TA329523**

Glyt1 (SLC6A9) Rabbit Polyclonal Antibody

Product data:

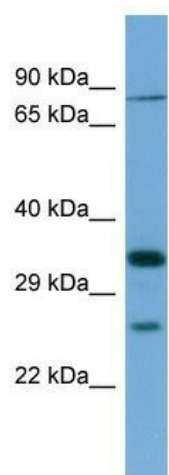
| | |
|-------------------------|---|
| Product Type: | Primary Antibodies |
| Applications: | WB |
| Recommended Dilution: | WB |
| Reactivity: | Human |
| Host: | Rabbit |
| Isotype: | IgG |
| Clonality: | Polyclonal |
| Immunogen: | The immunogen for Anti-SLC6A9 antibody is: synthetic peptide directed towards the N-terminal region of Human SLC6A9. Synthetic peptide located within the following region: ARPRMAAAHGVPVAPSSPEQNGAVPSEATKRDQNLKRGNWGNQIEFVLTSV |
| Formulation: | Liquid. Purified antibody supplied in 1x PBS buffer with 0.09% (w/v) sodium azide and 2% sucrose. |
| Purification: | Affinity Purified |
| Conjugation: | Unconjugated |
| Storage: | Store at -20°C as received. |
| Stability: | Stable for 12 months from date of receipt. |
| Predicted Protein Size: | 72 kDa |
| Gene Name: | solute carrier family 6 member 9 |
| Database Link: | NP_964012 Entrez Gene 6536 Human P48067 |
| Background: | SLC6A9 terminates the action of glycine by its high affinity sodium-dependent reuptake into presynaptic terminals. It may play a role in regulation of glycine levels in NMDA receptor-mediated neurotransmission. |
| Synonyms: | GLYT1 |
| Note: | Immunogen sequence homology: Dog: 100%; Pig: 100%; Human: 100%; Rabbit: 100%; Guinea pig: 100%; Rat: 93%; Horse: 93%; Mouse: 93%; Bovine: 93% |



[View online »](#)

Protein Families: Druggable Genome, Transmembrane

Product images:



Host: Rabbit; Target Name: SLC6A9; Sample
Tissue: THP-1 Whole cell lysates; Antibody
Dilution: 1.0ug/ml