

Product datasheet for **TA329522**

SIGLEC6 Rabbit Polyclonal Antibody

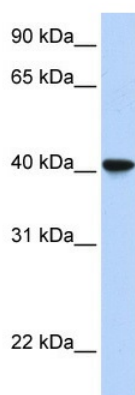
Product data:

Product Type:	Primary Antibodies
Recommended Dilution:	WB
Reactivity:	Human
Host:	Rabbit
Isotype:	IgG
Clonality:	Polyclonal
Immunogen:	The immunogen for anti-SIGLEC6 antibody: synthetic peptide directed towards the middle region of human SIGLEC6. Synthetic peptide located within the following region: FSWMSAAPTSLGPRTTQSSVLTITPRPQDHSTNLTCQVTFPGAGVTMERT
Formulation:	Liquid. Purified antibody supplied in 1x PBS buffer with 0.09% (w/v) sodium azide and 2% sucrose. <i>Note that this product is shipped as lyophilized powder to China customers.</i>
Conjugation:	Unconjugated
Storage:	Store at -20°C as received.
Stability:	Stable for 12 months from date of receipt.
Predicted Protein Size:	36 kDa
Gene Name:	sialic acid binding Ig like lectin 6
Database Link:	NP_942143 Entrez Gene 946 Human O43699
Background:	SIGLEC6 is a Putative adhesion molecule that mediates sialic-acid dependent binding to cells. It binds to alpha-2,6-linked sialic acid. The sialic acid recognition site may be masked by cis interactions with sialic acids on the same cell surface.
Synonyms:	CD33L; CD33L1; CD33L2; CD327; CDW327; OBBP1
Note:	Immunogen sequence homology: Human: 100%; Horse: 93%; Dog: 91%; Pig: 86%; Mouse: 86%; Bovine: 86%; Guinea pig: 86%; Rat: 82%; Rabbit: 79%
Protein Families:	Druggable Genome, Secreted Protein, Transmembrane



[View online »](#)

Product images:



WB Suggested Anti-SIGLEC6 Antibody Titration:
0.2-1 ug/ml
ELISA Titer: 1:1562500
Positive Control: Human Lung