

## Product datasheet for **TA329520**

### ATP citrate lyase (ACLY) Rabbit Polyclonal Antibody

#### Product data:

Product Type:	Primary Antibodies
Applications:	WB
Recommended Dilution:	WB
Reactivity:	Human
Host:	Rabbit
Isotype:	IgG
Clonality:	Polyclonal
Immunogen:	The immunogen for anti-ACLY antibody: synthetic peptide directed towards the middle region of human ACLY. Synthetic peptide located within the following region: SRTASFSESRRADEVAPAKKAKPAMPQDSVSPRSLQGKSTTLFSRHTKAI
Formulation:	Liquid. Purified antibody supplied in 1x PBS buffer with 0.09% (w/v) sodium azide and 2% sucrose. <i>Note that this product is shipped as lyophilized powder to China customers.</i>
Conjugation:	Unconjugated
Storage:	Store at -20°C as received.
Stability:	Stable for 12 months from date of receipt.
Predicted Protein Size:	121 kDa
Gene Name:	ATP citrate lyase
Database Link:	<a href="#">NP_001087</a> <a href="#">Entrez Gene 47 Human</a> <a href="#">P53396</a>
Background:	RNX (HOX11L2, TLX3) belongs to a family of orphan homeobox genes that encode DNA-binding nuclear transcription factors. Members of the HOX11 gene family are characterized by a threonine-47 replacing cytosine in the highly conserved homeodomain (Dear et al., 1993 [PubMed 8099440]). [supplied by OMIM, Mar 2008]. Publication Note: This RefSeq record includes a subset of the publications that are available for this gene. Please see the Gene record to access additional publications. ##Evidence-Data-START## Transcript exon combination :: BC017291.2, BG828093.1 [ECO:0000332] RNAseq introns :: single sample supports all introns ERS025095 [ECO:0000348] ##Evidence-Data-END##



[View online »](#)

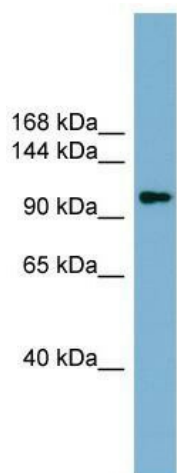
**Synonyms:** ACL; ATPCL; CLATP

**Note:** Immunogen sequence homology: Human: 100%; Rabbit: 100%; Dog: 93%; Pig: 93%; Rat: 93%; Mouse: 93%; Horse: 92%; Sheep: 92%; Bovine: 92%; Guinea pig: 86%; Zebrafish: 79%

**Protein Families:** Druggable Genome

**Protein Pathways:** Citrate cycle (TCA cycle), Metabolic pathways

### Product images:



WB Suggested Anti-ACLY Antibody Titration: 0.2-1 ug/ml; ELISA Titer: 1:312500; Positive Control: ACHN cell lysate. ACLY is strongly supported by BioGPS gene expression data to be expressed in Human ACHN cells