

Product datasheet for **TA329519**

CES2 Rabbit Polyclonal Antibody

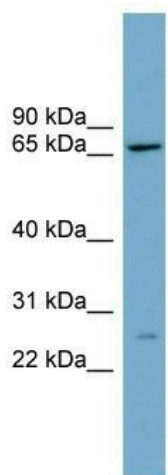
Product data:

Product Type:	Primary Antibodies
Applications:	WB
Recommended Dilution:	WB
Reactivity:	Human
Host:	Rabbit
Isotype:	IgG
Clonality:	Polyclonal
Immunogen:	The immunogen for anti-CES2 antibody: synthetic peptide directed towards the middle region of human CES2. Synthetic peptide located within the following region: QHQP SWLKNIRPPHMKADHVKFTEEEEQLSRKMMKYWANFARNGNPNGEG
Formulation:	Liquid. Purified antibody supplied in 1x PBS buffer with 0.09% (w/v) sodium azide and 2% sucrose. <i>Note that this product is shipped as lyophilized powder to China customers.</i>
Conjugation:	Unconjugated
Storage:	Store at -20°C as received.
Stability:	Stable for 12 months from date of receipt.
Predicted Protein Size:	67 kDa
Gene Name:	carboxylesterase 2
Database Link:	NP_932327 Entrez Gene 8824 Human O00748
Background:	This gene encodes a member of the carboxylesterase large family. The family members are responsible for the hydrolysis or transesterification of various xenobiotics, such as cocaine and heroin, and endogenous substrates with ester, thioester, or amide bonds. They may participate in fatty acyl and cholesterol ester metabolism, and may play a role in the blood-brain barrier system. The protein encoded by this gene is the major intestinal enzyme and functions in intestine drug clearance. Alternatively spliced transcript variants have been found for this gene. [provided by RefSeq, Oct 2010]



[View online »](#)

Synonyms:	CE-2; CES2A1; iCE; PCE-2
Note:	Immunogen sequence homology: Human: 100%
Protein Families:	Druggable Genome
Protein Pathways:	Drug metabolism - other enzymes

Product images:

WB Suggested Anti-CES2 Antibody Titration: 0.2-1 ug/ml; Positive Control: THP-1 cell lysate