

## Product datasheet for **TA329518**

### **PLOD2 Rabbit Polyclonal Antibody**

#### **Product data:**

Product Type:	Primary Antibodies
Applications:	IHC, WB
Recommended Dilution:	WB
Reactivity:	Human
Host:	Rabbit
Isotype:	IgG
Clonality:	Polyclonal
Immunogen:	The immunogen for anti-PLOD2 antibody: synthetic peptide directed towards the middle region of human PLOD2. Synthetic peptide located within the following region: IKGKTLRSEMNERNYFVRDKLDPDMALCRNAREMTLQREKDSPTPETFQM
Formulation:	Liquid. Purified antibody supplied in 1x PBS buffer with 0.09% (w/v) sodium azide and 2% sucrose. <i>Note that this product is shipped as lyophilized powder to China customers.</i>
Conjugation:	Unconjugated
Storage:	Store at -20°C as received.
Stability:	Stable for 12 months from date of receipt.
Predicted Protein Size:	84 kDa
Gene Name:	procollagen-lysine,2-oxoglutarate 5-dioxygenase 2
Database Link:	<a href="#">NP_891988</a> <a href="#">Entrez Gene 5352 Human</a> <a href="#">O00469</a>



[View online »](#)

**Background:**

PLOD2 forms hydroxylysine residues in -Xaa-Lys-Gly- sequences in collagens. These hydroxylysines serve as sites of attachment for carbohydrate units and are essential for the stability of the intermolecular collagen cross-links. The protein encoded by this gene is a membrane-bound homodimeric enzyme that is localized to the cisternae of the rough endoplasmic reticulum. The enzyme (cofactors iron and ascorbate) catalyzes the hydroxylation of lysyl residues in collagen-like peptides. The resultant hydroxylysyl groups are attachment sites for carbohydrates in collagen and thus are critical for the stability of intermolecular crosslinks. Some patients with Ehlers-Danlos syndrome type VIB have deficiencies in lysyl hydroxylase activity. Mutations in the coding region of this gene are associated with Bruck syndrome. Alternative splicing results in multiple transcript variants encoding different isoforms.

**Synonyms:**

BRKS2; LH2; TLH

**Note:**

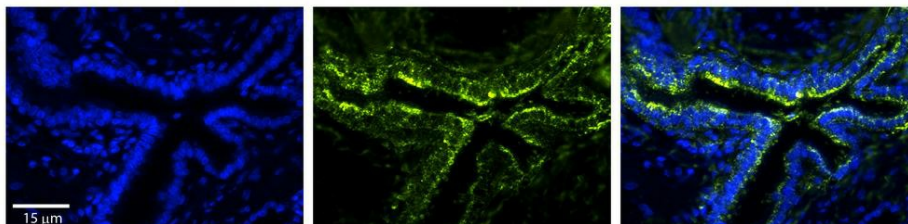
Immunogen sequence homology: Dog: 100%; Pig: 100%; Rat: 100%; Horse: 100%; Human: 100%; Mouse: 100%; Bovine: 100%; Rabbit: 100%

**Protein Pathways:**

Lysine degradation

**Product images:**


WB Suggested Anti-PLOD2 Antibody Titration: 0.2-1 ug/ml; ELISA Titer: 1:312500; Positive Control: DU145 cell lysate PLOD2 is strongly supported by BioGPS gene expression data to be expressed in Human DU145 cells



Rabbit Anti-PLOD2 Antibody; Formalin Fixed Paraffin Embedded Tissue: Human Bronchial Epithelial Tissue; Observed Staining: Cytoplasmic; Primary Antibody Concentration: 1:100; Secondary Antibody: Donkey anti-Rabbit-Cy3; Secondary Antibody Concentration: 1:200; Magnification: 20X; Exposure Time: 0.5–2.0 sec;