

Product datasheet for **TA329517**

ZGPAT Rabbit Polyclonal Antibody

Product data:

Product Type:	Primary Antibodies
Recommended Dilution:	WB
Reactivity:	Human
Host:	Rabbit
Isotype:	IgG
Clonality:	Polyclonal
Immunogen:	The immunogen for anti-ZGPAT antibody: synthetic peptide directed towards the middle region of human ZGPAT. Synthetic peptide located within the following region: LLREAVVEGDGILPPLRTEATESDSDSDGTGDSSYARVVGSDAVDSAQSS
Formulation:	Liquid. Purified antibody supplied in 1x PBS buffer with 0.09% (w/v) sodium azide and 2% sucrose. <i>Note that this product is shipped as lyophilized powder to China customers.</i>
Conjugation:	Unconjugated
Storage:	Store at -20°C as received.
Stability:	Stable for 12 months from date of receipt.
Predicted Protein Size:	57 kDa
Gene Name:	zinc finger CCCH-type and G-patch domain containing
Database Link:	NP_115916 Entrez Gene 84619 Human Q8N5A5
Background:	ZGPAT contains 1 C3H1-type zinc finger and 1 G-patch domain. The function of the ZGPAT protein is not known.
Synonyms:	GPATC6; GPATCH6; KIAA1847; ZC3H9; ZC3HDC9; ZIP
Note:	Immunogen sequence homology: Human: 100%



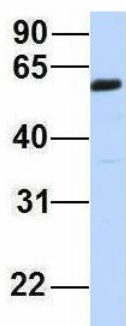
[View online »](#)

Product images:



WB Suggested Anti-ZGPAT Antibody Titration: 0.2-1 ug/ml
 ELISA Titer: 1:312500
 Positive Control: Human Liver

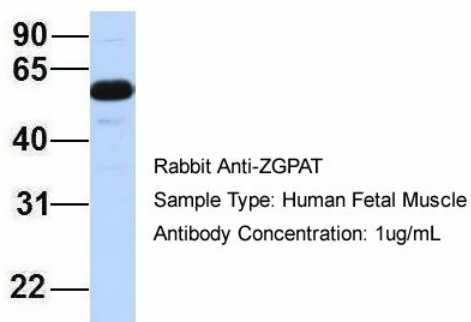
ZGPAT



Rabbit Anti-ZGPAT
 Sample Type: Human Adult Placenta
 Antibody Concentration: 1ug/mL

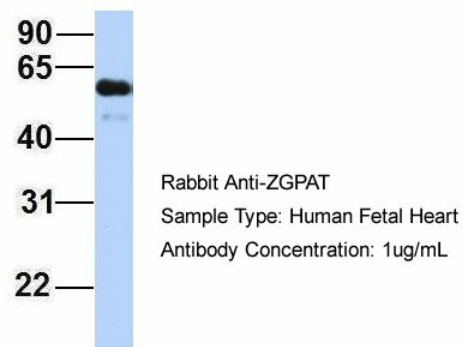
Host: Rabbit
 Target Name: ZGPAT
 Sample Type: Human Adult Placenta
 Antibody Dilution: 1.0ug/ml

ZGPAT



Host: Rabbit
Target Name: ZGPAT
Sample Type: Human Fetal Muscle
Antibody Dilution: 1.0ug/ml

ZGPAT



Host: Rabbit
Target Name: ZGPAT
Sample Type: Human Fetal Heart
Antibody Dilution: 1.0ug/ml