

Product datasheet for **TA329516**

ATG4A Rabbit Polyclonal Antibody

Product data:

Product Type:	Primary Antibodies
Applications:	WB
Recommended Dilution:	WB
Reactivity:	Human
Host:	Rabbit
Isotype:	IgG
Clonality:	Polyclonal
Immunogen:	The immunogen for anti-ATG4A antibody: synthetic peptide directed towards the middle region of human ATG4A. Synthetic peptide located within the following region: PQSLGALGGKPNNAYYFIGFLGDELIFLDPHTTQTFVDTEENGTVNDQTF
Formulation:	Liquid. Purified antibody supplied in 1x PBS buffer with 0.09% (w/v) sodium azide and 2% sucrose. <i>Note that this product is shipped as lyophilized powder to China customers.</i>
Conjugation:	Unconjugated
Storage:	Store at -20°C as received.
Stability:	Stable for 12 months from date of receipt.
Predicted Protein Size:	45 kDa
Gene Name:	autophagy related 4A cysteine peptidase
Database Link:	NP_840054 Entrez Gene 115201 Human Q8WYN0
Background:	Autophagy is the process by which endogenous proteins and damaged organelles are destroyed intracellularly. Autophagy is postulated to be essential for cell homeostasis and cell remodeling during differentiation, metamorphosis, non-apoptotic cell death, and aging. Reduced levels of autophagy have been described in some malignant tumors, and a role for autophagy in controlling the unregulated cell growth linked to cancer has been proposed. ATG4A is a member of the autophagin protein family. ATG4A is also designated as a member of the C-54 family of cysteine proteases.



[View online »](#)

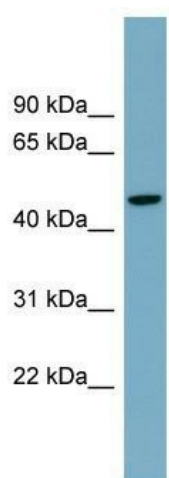
Synonyms: APG4A; AURL2

Note: Immunogen sequence homology: Dog: 100%; Pig: 100%; Rat: 100%; Horse: 100%; Human: 100%; Mouse: 100%; Bovine: 100%; Rabbit: 100%; Zebrafish: 79%

Protein Families: Protease

Protein Pathways: Regulation of autophagy

Product images:



WB Suggested Anti-ATG4A Antibody Titration: 0.2-1 ug/ml; ELISA Titer: 1:312500; Positive Control: Human Spleen