

Product datasheet for **TA329515**

PPAP2A (PLPP1) Rabbit Polyclonal Antibody

Product data:

Product Type:	Primary Antibodies
Applications:	IHC, WB
Recommended Dilution:	WB, IHC
Reactivity:	Human
Host:	Rabbit
Isotype:	IgG
Clonality:	Polyclonal
Immunogen:	The immunogen for anti-PPAP2A antibody: synthetic peptide directed towards the N terminal of human PPAP2A. Synthetic peptide located within the following region: QIYPFQRGFFCKDNSINYPYHDSTVTSTVLILVGVGLPISSILGETLSV
Formulation:	Liquid. Purified antibody supplied in 1x PBS buffer with 0.09% (w/v) sodium azide and 2% sucrose. <i>Note that this product is shipped as lyophilized powder to China customers.</i>
Conjugation:	Unconjugated
Storage:	Store at -20°C as received.
Stability:	Stable for 12 months from date of receipt.
Predicted Protein Size:	31 kDa
Gene Name:	phospholipid phosphatase 1
Database Link:	NP_003702 Entrez Gene 8611 Human O14494



[View online »](#)

Background:

PPAP2A is a member of the phosphatidic acid phosphatase (PAP) family. PAPs convert phosphatidic acid to diacylglycerol, and function in de novo synthesis of glycerolipids as well as in receptor-activated signal transduction mediated by phospholipase D. This protein is an integral membrane glycoprotein, and has been shown to be a surface enzyme that plays an active role in the hydrolysis and uptake of lipids from extracellular space. The protein encoded by this gene is a member of the phosphatidic acid phosphatase (PAP) family. PAPs convert phosphatidic acid to diacylglycerol, and function in de novo synthesis of glycerolipids as well as in receptor-activated signal transduction mediated by phospholipase D. This protein is an integral membrane glycoprotein, and has been shown to be a surface enzyme that plays an active role in the hydrolysis and uptake of lipids from extracellular space. The expression of this gene is found to be regulated by androgen in a prostatic adenocarcinoma cell line. At least two alternatively spliced transcript variants encoding distinct isoforms have been described.

Synonyms:

LLP1a; LPP1; PAP-2a; PAP2; PPAP2A

Note:

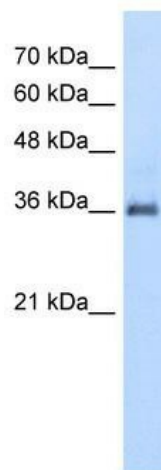
Immunogen sequence homology: Human: 100%; Rat: 93%; Pig: 86%; Guinea pig: 86%; Mouse: 79%

Protein Families:

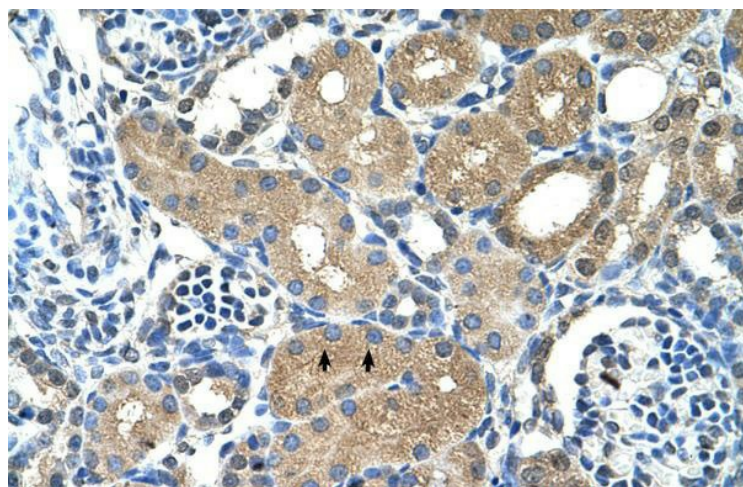
Druggable Genome, Transmembrane

Protein Pathways:

Ether lipid metabolism, Fc gamma R-mediated phagocytosis, Glycerolipid metabolism, Glycerophospholipid metabolism, Metabolic pathways, Sphingolipid metabolism

Product images:

WB Suggested Anti-PPAP2A Antibody Titration:
5.0 ug/ml; Positive Control: HepG2 cell lysate



Human kidney