

Product datasheet for TA329514

PPP4R2 Rabbit Polyclonal Antibody

Product data:

Product Type:	Primary Antibodies
Applications:	WB
Recommended Dilution:	WB
Reactivity:	Human
Host:	Rabbit
Isotype:	IgG
Clonality:	Polyclonal
Immunogen:	The immunogen for anti-PPP4R2 antibody: synthetic peptide directed towards the C terminal of human PPP4R2. Synthetic peptide located within the following region: DSRCTRQHCTEEDEEEDEEEEEESFMTSREMIPERKNQEKESDDALTVNE
Formulation:	Liquid. Purified antibody supplied in 1x PBS buffer with 0.09% (w/v) sodium azide and 2% sucrose. <i>Note that this product is shipped as lyophilized powder to China customers.</i>
Conjugation:	Unconjugated
Storage:	Store at -20°C as received.
Stability:	Stable for 12 months from date of receipt.
Predicted Protein Size:	47 kDa
Gene Name:	protein phosphatase 4 regulatory subunit 2
Database Link:	NP_777567 Entrez Gene 151987 Human Q9NY27
Background:	PPP4R2 is the regulatory subunit of serine/threonine-protein phosphatase 4 (PP4). It may regulate the activity of PPP4C at centrosomal microtubule organizing centers. Its interaction with the SMN complex leads to enhance the temporal localization of snRNPs, suggesting a role of PPP4C in maturation of spliceosomal snRNPs. The PPP4C-PPP4R2-PPP4R3A PP4 complex specifically dephosphorylates H2AFX phosphorylated on 'Ser-140' (gamma-H2AFX) generated during DNA replication and required for DNA DSB repair.
Synonyms:	PP4R2

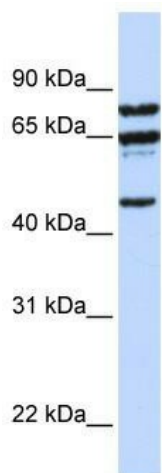


[View online »](#)

Note: Immunogen sequence homology: Dog: 100%; Pig: 100%; Rat: 100%; Horse: 100%; Human: 100%; Mouse: 100%; Bovine: 100%; Rabbit: 93%

Protein Families: Phosphatase

Product images:



WB Suggested Anti-PPP4R2 Antibody Titration: 0.2-1 ug/ml; ELISA Titer: 1:62500; Positive Control: Jurkat cell lysate PPP4R2 is supported by BioGPS gene expression data to be expressed in Jurkat