

## Product datasheet for **TA329513**

### YIPF6 Rabbit Polyclonal Antibody

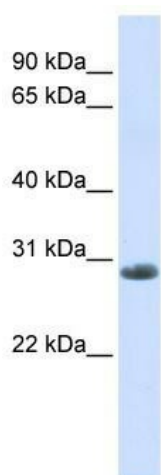
#### Product data:

Product Type:	Primary Antibodies
Applications:	WB
Recommended Dilution:	WB
Reactivity:	Human
Host:	Rabbit
Isotype:	IgG
Clonality:	Polyclonal
Immunogen:	The immunogen for anti-YIPF6 antibody: synthetic peptide directed towards the C terminal of human YIPF6. Synthetic peptide located within the following region: MVRLFVIVMFAWSIVASTALLADSQPPNRRALAVYPVFLFYFVISWMIL
Formulation:	Liquid. Purified antibody supplied in 1x PBS buffer with 0.09% (w/v) sodium azide and 2% sucrose. <i>Note that this product is shipped as lyophilized powder to China customers.</i>
Conjugation:	Unconjugated
Storage:	Store at -20°C as received.
Stability:	Stable for 12 months from date of receipt.
Predicted Protein Size:	26 kDa
Gene Name:	Yip1 domain family member 6
Database Link:	<a href="#">NP_776195</a> <a href="#">Entrez Gene 286451 Human</a> <a href="#">Q96EC8</a>
Background:	YIPF6 is a multi-pass membrane proteinPotential. It belongs to the YIP1 family.The exact function of YIPF6 remains unknown.
Synonyms:	FinGER6
Note:	Immunogen sequence homology: Human: 100%; Rabbit: 100%; Pig: 93%; Rat: 93%; Horse: 93%; Mouse: 93%; Bovine: 93%; Guinea pig: 93%; Dog: 86%; Zebrafish: 79%
Protein Families:	Transmembrane



[View online »](#)

## Product images:



WB Suggested Anti-YIPF6 Antibody Titration: 0.2-1 ug/ml; ELISA Titer: 1:312500; Positive Control: Human Muscle