

## Product datasheet for **TA329510**

### GPR161 Rabbit Polyclonal Antibody

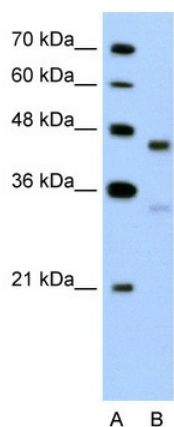
#### Product data:

Product Type:	Primary Antibodies
Recommended Dilution:	WB, IHC
Reactivity:	Human
Host:	Rabbit
Isotype:	IgG
Clonality:	Polyclonal
Immunogen:	The immunogen for anti-GPR161 antibody: synthetic peptide directed towards the C terminal of human GPR161. Synthetic peptide located within the following region: INLFGEEALPGVLVTARTVPGGGFGRRGSRRTLVSQRLQLQSIEEGDVLA
Formulation:	Liquid. Purified antibody supplied in 1x PBS buffer with 0.09% (w/v) sodium azide and 2% sucrose. <i>Note that this product is shipped as lyophilized powder to China customers.</i>
Conjugation:	Unconjugated
Storage:	Store at -20°C as received.
Stability:	Stable for 12 months from date of receipt.
Predicted Protein Size:	44 kDa
Gene Name:	G protein-coupled receptor 161
Database Link:	<a href="#">NP_001254538</a> <a href="#">Entrez Gene 23432 Human</a> <a href="#">Q8N6U8</a>
Background:	GPR161 is Orphan receptor.
Synonyms:	RE2
Note:	Immunogen sequence homology: Human: 100%; Bovine: 100%; Rat: 93%; Dog: 86%; Pig: 86%; Guinea pig: 86%; Mouse: 85%; Horse: 79%
Protein Families:	Druggable Genome, GPCR, Transmembrane

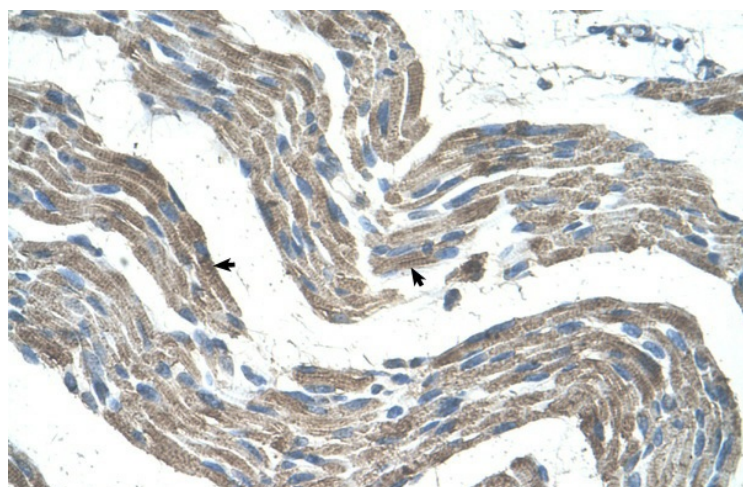


[View online »](#)

Product images:



WB Suggested Anti-GPR161 Antibody Titration:  
5.0ug/ml  
Positive Control: HepG2 cell lysate



Human Muscle