

Product datasheet for **TA329509**

SLC22A7 Rabbit Polyclonal Antibody

Product data:

Product Type:	Primary Antibodies
Applications:	IHC, WB
Recommended Dilution:	WB, IHC
Reactivity:	Human
Host:	Rabbit
Isotype:	IgG
Clonality:	Polyclonal
Immunogen:	The immunogen for anti-SLC22A7 antibody: synthetic peptide directed towards the C terminal of human SLC22A7. Synthetic peptide located within the following region: LSLPKLTYGGIALLAAGTALLLPETRQAQLPETIQDVERKSAPTSLQEEE
Formulation:	Liquid. Purified antibody supplied in 1x PBS buffer with 0.09% (w/v) sodium azide and 2% sucrose. <i>Note that this product is shipped as lyophilized powder to China customers.</i>
Conjugation:	Unconjugated
Storage:	Store at -20°C as received.
Stability:	Stable for 12 months from date of receipt.
Predicted Protein Size:	26 kDa
Gene Name:	solute carrier family 22 member 7
Database Link:	NP_696961 Entrez Gene 10864 Human Q9Y694



[View online »](#)

Background:

SLC22A7 is involved in the sodium-independent transport and excretion of organic anions, some of which are potentially toxic. The protein is an integral membrane protein and appears to be localized to the basolateral membrane of the kidney. The protein encoded by this gene is involved in the sodium-independent transport and excretion of organic anions, some of which are potentially toxic. The encoded protein is an integral membrane protein and appears to be localized to the basolateral membrane of the kidney. Alternatively spliced transcript variants encoding different isoforms have been described. The protein encoded by this gene is involved in the sodium-independent transport and excretion of organic anions, some of which are potentially toxic. The encoded protein is an integral membrane protein and appears to be localized to the basolateral membrane of the kidney. Alternatively spliced transcript variants encoding different isoforms have been described.

Synonyms:

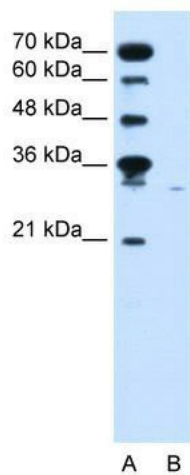
NLT; OAT2

Note:

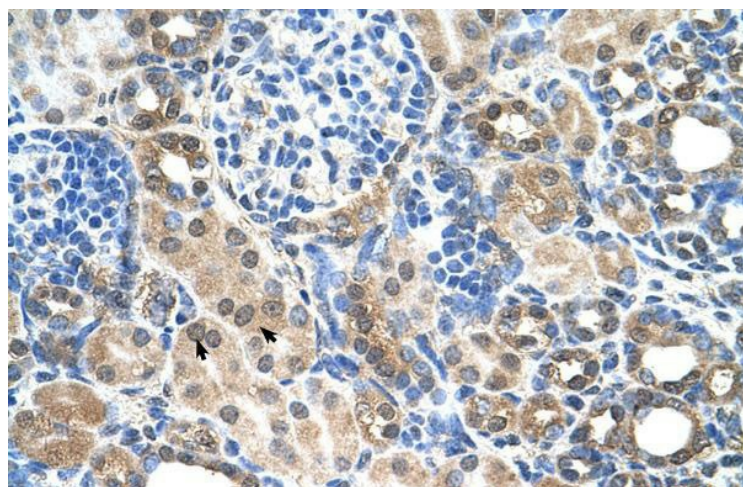
Immunogen sequence homology: Rat: 100%; Horse: 100%; Human: 100%; Mouse: 100%; Rabbit: 100%; Pig: 93%; Bovine: 93%; Dog: 91%

Protein Families:

Druggable Genome, Transmembrane

Product images:

WB Suggested Anti-SLC22A7 Antibody Titration: 0.2-1 ug/ml; Positive Control: Jurkat cell lysate
There is BioGPS gene expression data showing that SLC22A7 is expressed in Jurkat



Human kidney