

Product datasheet for **TA329507**

Viperin (RSAD2) Rabbit Polyclonal Antibody

Product data:

Product Type:	Primary Antibodies
Applications:	IHC, WB
Recommended Dilution:	WB, IHC
Reactivity:	Human
Host:	Rabbit
Isotype:	IgG
Clonality:	Polyclonal
Immunogen:	The immunogen for anti-RSAD2 antibody: synthetic peptide directed towards the C terminal of human RSAD2. Synthetic peptide located within the following region: YLILDEYMRFLNCRKGRKDPSKSILDVGVVEAIKFSGFDEKMFLKRGGKY
Formulation:	Liquid. Purified antibody supplied in 1x PBS buffer with 0.09% (w/v) sodium azide and 2% sucrose. <i>Note that this product is shipped as lyophilized powder to China customers.</i>
Conjugation:	Unconjugated
Storage:	Store at -20°C as received.
Stability:	Stable for 12 months from date of receipt.
Predicted Protein Size:	40 kDa
Gene Name:	radical S-adenosyl methionine domain containing 2
Database Link:	NP_542388 Entrez Gene 91543 Human Q8WXG1
Background:	RSAD2 is a potential antiviral effector. Western blots using two different antibodies against two unique regions of this protein target confirm the same apparent molecular weight in our tests.
Synonyms:	2510004L01Rik; cig5; cig33; vig1
Note:	Immunogen sequence homology: Dog: 100%; Pig: 100%; Rat: 100%; Human: 100%; Mouse: 100%; Bovine: 100%; Rabbit: 100%; Zebrafish: 100%; Horse: 93%; Guinea pig: 86%

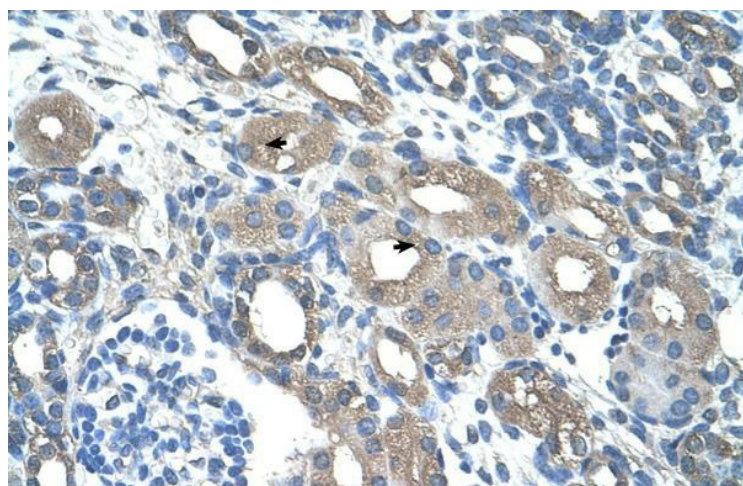


[View online »](#)

Product images:



WB Suggested Anti-RSAD2 Antibody Titration: 5.0 ug/ml; Positive Control: Jurkat cell lysate



Human kidney